

CLEARFIL MAJESTY™ Flow

Description

- CLEARFIL MAJESTY™ Flow is a flowable, super-filled, light-cured, radiopaque, restorative composite resin.
- CLEARFIL MAJESTY™ Flow offers optimal consistency for controlled application and flowability.
- The right consistency is essential for the efficacy of a flowable composite. CLEARFIL MAJESTY™ Flow meets this demand sufficiently. With its material benefits and the new ergonomic and comfortable syringe, it truly satisfies the dentist.
- CLEARFIL MAJESTY™ Flow is characterized by very high filler loading (81 wt%) for exceptional strength and wear resistance, even for posterior restorations.

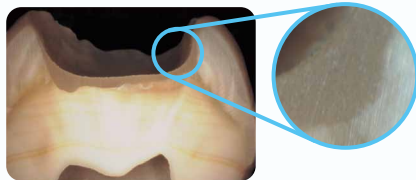
CLINICAL APPLICATIONS

- Direct restorations for anterior and posterior teeth (Class I - III, V cavities, cervical caries, root erosion)
- Cavity base / liner
- Intraoral repairs of fracture crowns / bridges / composite resin

Pic.1

The image of the cross section of a cavity covered with one layer of CLEARFIL MAJESTY™ Flow

Due to its flexible consistency, it will reach every area of the cavity and combine well with the natural tooth substance.



Pic.2

CLEARFIL MAJESTY™ Flow filled into a Class V cavity

It can be easily filled into such a cavity without running.



Pic.3

Anterior tooth restoration with single layer



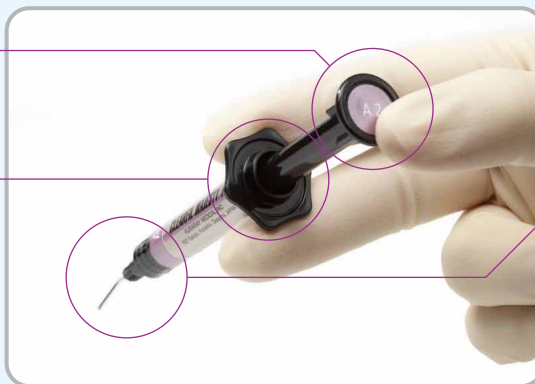
Pic.4



SYRINGE DESIGN

The wing-shaped plunger injects its content paste till the last.

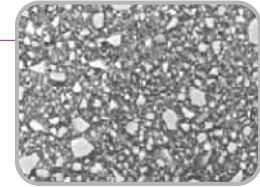
The extra wide holder offers a good grip for easy and comfortable application.



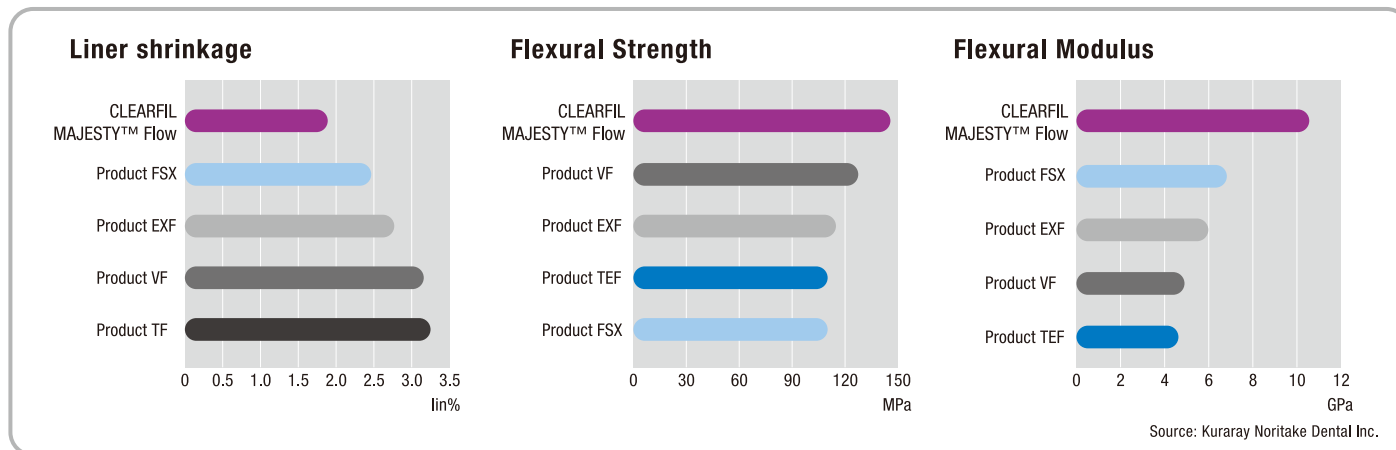
The structure has the least space between the syringe and nozzle. This can exhibit lowest incidents of voids.

Performance

- CLEARFIL MAJESTY™ Flow exhibits impressive physical properties, and maintain excellent esthetic qualities.
- It has the lowest polymerization shrinkage of the tested flowable composites.
- CLEARFIL MAJESTY™ Flow shows the highest flexural strength among the tested flowable composites.



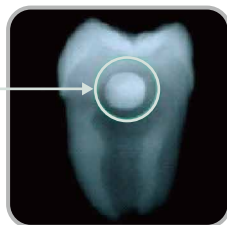
Picture of scanning electron microscope



RADIOPACITY

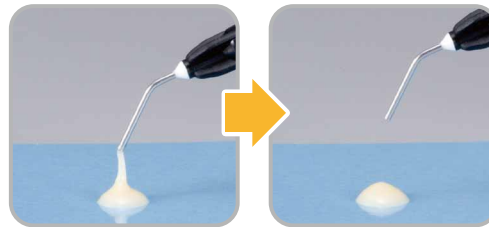
- High radiopacity for accurate detection

CLEARFIL MAJESTY™ Flow
Its radiopacity corresponds to 290% of 1mm of aluminium when evaluated according to ISO 4049



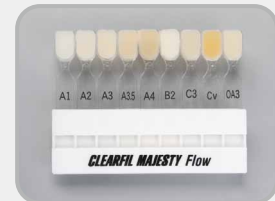
Easy and non-sticky dispensing

Precise flow and release formula




SHADE GUIDE

- Available in 9 shades: A1, A2, A3, A3.5, A4, B2, C3, Cv (Cervical) and OA3



- #2610-WD CLEARFIL MAJESTY™ Flow (A1)
 - #2611-WD CLEARFIL MAJESTY™ Flow (A2)
 - #2612-WD CLEARFIL MAJESTY™ Flow (A3)
 - #2613-WD CLEARFIL MAJESTY™ Flow (A3.5)
 - #2614-WD CLEARFIL MAJESTY™ Flow (A4)
 - #2616-WD CLEARFIL MAJESTY™ Flow (B2)
 - #2618-WD CLEARFIL MAJESTY™ Flow (C3)
 - #2621-WD CLEARFIL MAJESTY™ Flow (Cv)
 - #2632-WD CLEARFIL MAJESTY™ Flow (OA3)
 - #1015-WD CLEARFIL MAJESTY™ Flow Needle Tip 20 pcs
 - #2610-WD CLEARFIL MAJESTY™ Flow Shade Guide
- 3.2g/1.5ml, Needle Tip 15 pcs

- Read the Instruction for Use before use.
- The measurement data contained in this brochure are obtained by the results of tests performed by Kuraray Noritake Dental Inc.
- The colors of the product pastes and hardened products shown in this brochure may vary from the actual colors.
- The specifications and appearance of the product are subject to change without notice.

 Kuraray Noritake Dental Inc.

Ote Center Bldg.,
1-1-3, Otemachi, Chiyoda-Ku, Tokyo 100-0004, Japan
Website : <http://www.kuraraynoritake.com>

"CLEARFIL MAJESTY" is a trademark of Kuraray Co., Ltd.

1 / 2012-09