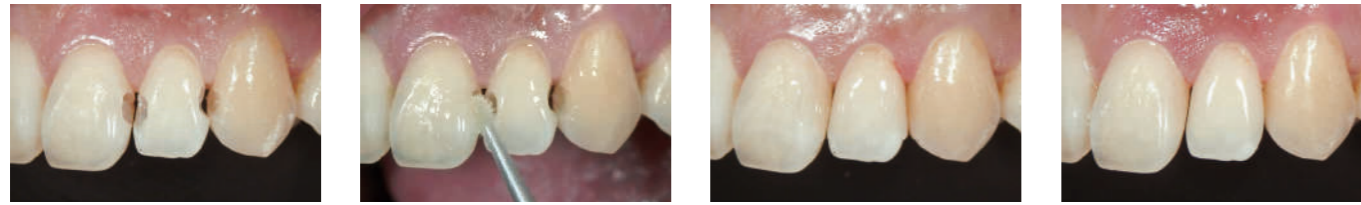


EASY CLINICAL STEPS AND WIDE RANGE OF INDICATIONS

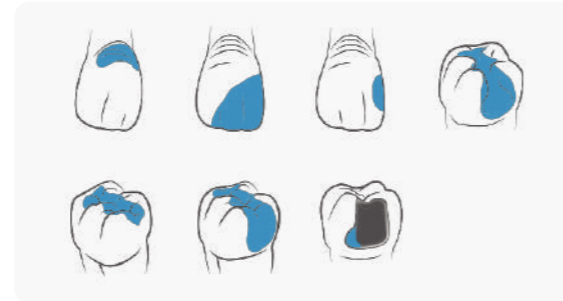


1. Prepare the cavity.
2. Apply bonding according to the manufacturer instructions.
3. Dispense and Sculpt CLEARFIL™ Esthetics Flow.
4. Polish the restoration.

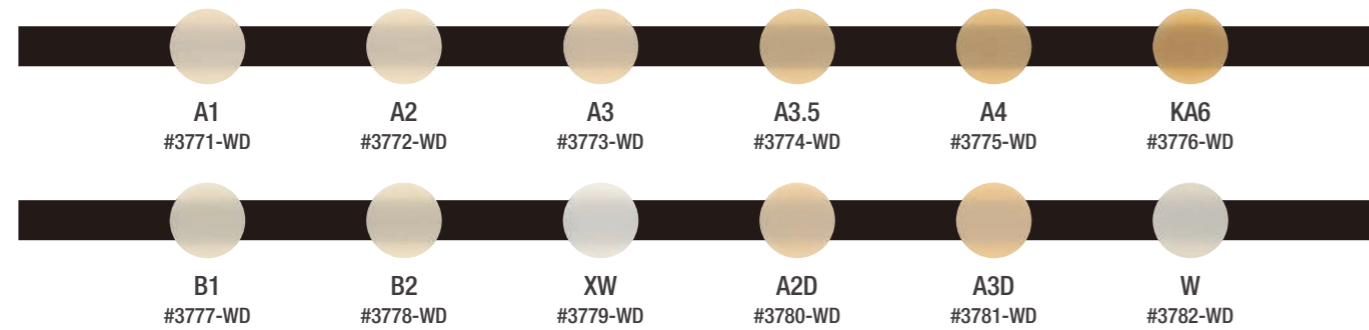
Pictures courtesy of Dr. Hirofumi Tashiro

Indications:

- Direct restorations for all cavity classes, cervical lesions (e.g. root surface caries, v-shape defects), tooth wear, and tooth erosion
- Cavity base/liner
- Corrections of tooth position and shape
- Intraoral repair of fractured restorations



AVAILABLE SHADES



RELATED PRODUCTS

NEEDLE TIP

#3785-WD

20 tips



SHADE GUIDE**

#3840-WD

All shades

SHADE GUIDE COMPACT**

#3841-WD

A1, A2, A3, A3.5, A4, B1, B2, B3, B4, C1, C2, C3, C4, D2, D3, XW, W

** Compatible to CLEARFIL™ AP-X ES-2 and CLEARFIL™ AP-X ESTHETICS Flow

- Before using this product, be sure to read the Instructions for Use supplied with the product.
- The specifications and appearance of the product are subject to change without notice.
- Printed color can be slightly different from actual color.

"CLEARFIL" is a trademark of KURARAY CO., LTD

Kuraray Noritake Dental Inc.

1621 Sakazu, Kurashiki, Okayama 710-0801, Japan

Website www.kuraraynoritake.com

CLEARFIL™ AP-X Esthetics Flow

Universal Flowable Composite

SUPERIOR GLOSS, POLISH AND DURABILITY

WIDE RANGE OF INDICATIONS



CLEARFIL™ AP-X Esthetics Flow

Your top award-winner for 4 years in a row universal flowable composite.



- ✓ superior gloss retention
- ✓ easy to polish
- ✓ durable restorations
- ✓ wide range of indications

EXCEPTIONALLY EASY TO POLISH AND NATURAL INSTANT GLOSS THAT REMAINS OVER TIME

The special submicron fillers (0.18 µm to 3.5 µm) join and stay together over time thanks to Kuraray Noritake Dental's proprietary silane coupling agent, creating outstanding gloss on the restoration surface and making it extremely easy to polish.



CLEARFIL™ AP-X Esthetics Flow



Filtek Z350XT Flowable*



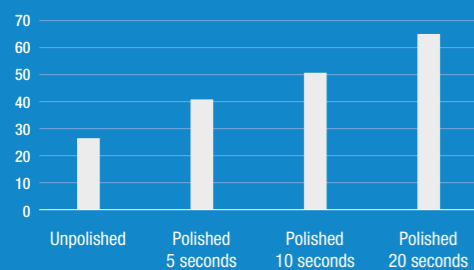
Tetric N-Flow*



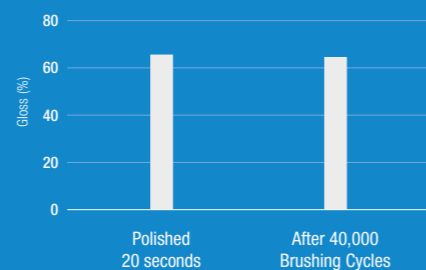
GrandioSO Heavy Flow

*Not a trademark of Kuraray Noritake Dental Inc.

Gloss (%)¹



Toothbrush wear test¹



Data source: Kuraray Noritake Dental Inc.

SUPERIOR EASY HANDLING

- Designed with the best handling characteristics in mind. The shape and size of different fillers provide superior handling characteristics to the paste improving handling and sculpting.
- Non-sticky composite.
- Minimal air bubbles when dispensing thanks to special syringe internal design.



EXCELLENT MECHANICAL PROPERTIES

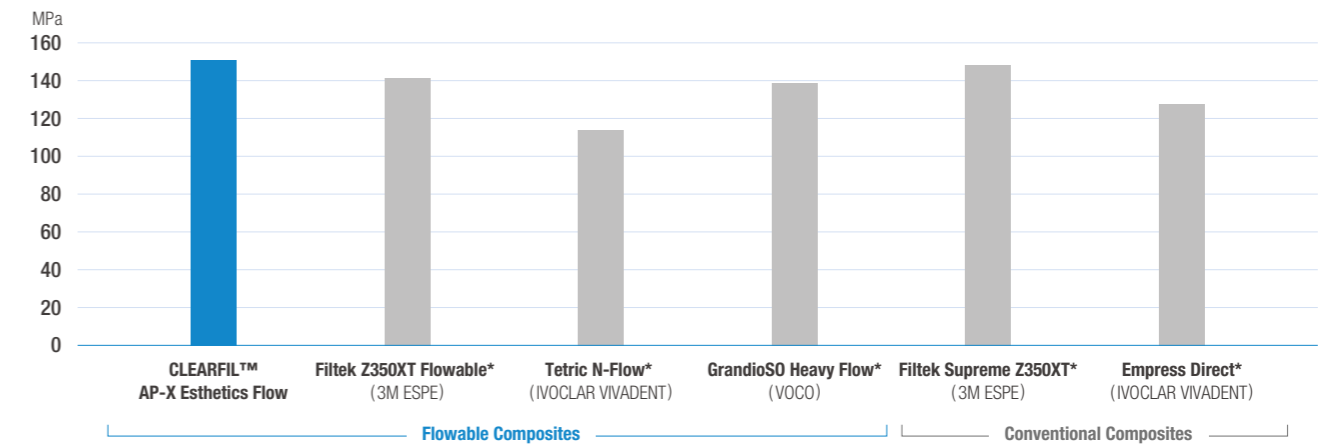
Kuraray Noritake Dental's proprietary silane coupling agent allows for the high filler loading¹ (75 wt%, 59 vol%) to provide superior mechanical properties making it suitable even for posterior restorations.

Flexural Strength²: 151 MPa Compressive Strength²: 373 MPa



Pictures courtesy of Dr. Keiichi Hosaka

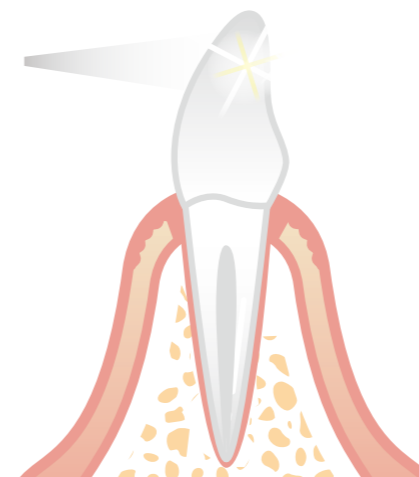
Flexural Strength Comparison^{1,2}



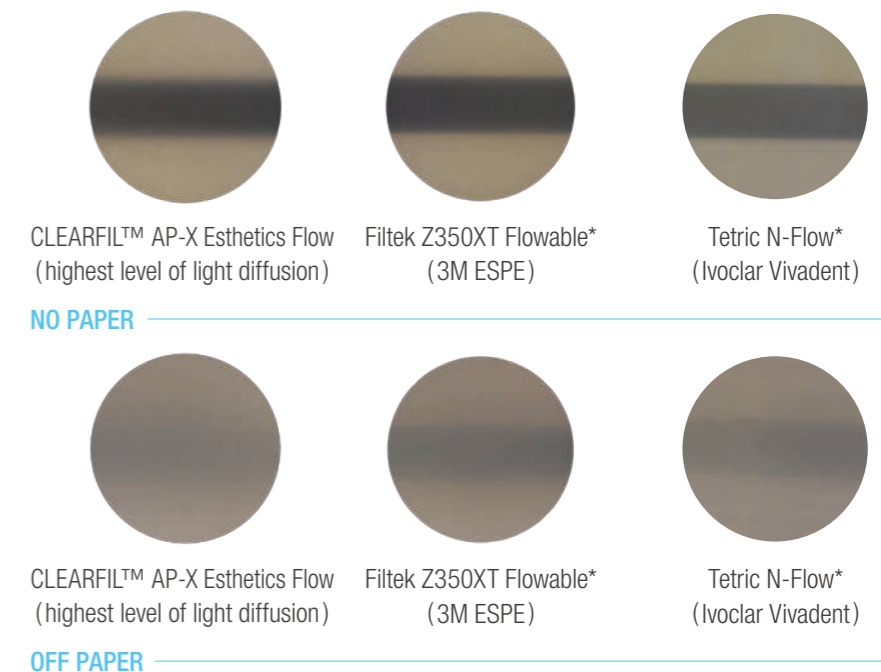
1, 2 According to ISO 4049:2009. 1, 2 Source: Kuraray Noritake Dental Inc.

LIGHT DIFFUSION

Light Diffusion refers to a material's ability to scatter and reflect light rays in many different angles in a way that emulates the natural teeth. The light effect of the light diffusion cluster fillers incorporated in CLEARFIL™ AP-X Esthetics Flow give you a great color adaptation, blending to tooth structure creating highly esthetic restorations.



Natural tooth substance absorbs light and diffuses it in all direction. Kuraray Light Diffusion filler diffuses light like natural tooth substance.



*Not a trademark of Kuraray Noritake Dental Inc.