

kuraray

Noritake

**CLEARFIL™
Universal Bond Quick**

APPLY AND PROCEED



RAPID BOND TECHNOLOGY WITH UNIVERSAL APPLICATION

APPLY AND PROCEED



Apply*



Dry



Light cure



Please follow the Instructions for Use
* APPLY with a rubbing motion and PROCEED

CLEARFIL™ Universal Bond Quick

CLEARFIL™ Universal Bond Quick is a single-bottle, fluoride-releasing, universal adhesive. Featuring Kuraray Noritake's Original MDP Monomer combined with our new Amide-based chemistry, introduces our unique Rapid Bond Technology. This is another game changer for the innovative CLEARFIL™ product range.

Envable Pedigree

As the innovators of the The Original MDP Monomer and manufacturers of gold-standard products such as CLEARFIL™ SE Bond and PANAVIA™, we have used this technology as the cornerstone of our continued pursuit of product excellence. With CLEARFIL™ Universal Bond Quick, we have combined all our expertise and technology to create a new dental adhesive that delivers faster, consistent and durable results.

Advanced Innovation

Kuraray Noritake's aim was to simplify adhesive workflow, whilst offering procedural freedom without compromise. Introducing CLEARFIL™ Universal Bond Quick's Rapid Bond Technology. By combining our Original MDP Monomer and new patented Amide-based chemistry, we have eliminated application waiting time & dramatically reduced water sorption and technique sensitivity.

APPLY AND PROCEED

CLEARFIL™ Universal Bond Quick reliably bonds to both direct and indirect restorations, core build-ups and repairs. Unlike other one-bottle adhesives which utilize 'slow monomers' requiring time to penetrate the tooth, with CLEARFIL™ Universal Bond Quick there is no need to wait during application, simply APPLY and PROCEED.



Rapid Bond Technology

Kuraray Noritake's Rapid Bond Technology combines our Original MDP Monomer with new hydrophilic Amide monomers which work together to deliver optimal stability and resistance to moisture for durable results. MDP monomer creates a strong chemical bond to hydroxyapatite. Having been in use for over 20 years, Kuraray Noritake's Original MDP Monomer delivers proven, unsurpassed adhesion.



Our new hydrophilic Amide monomers offer both, optimal penetration to tooth structure, due to its high hydrophilicity during application and optimal stability, thanks to the highly cross-linked polymer network, after curing.



Prepared dentine with smear layer.
Due to the hydrophilicity of dentine, an ultra hydrophilic adhesive is required to enable optimal penetration of the dentine.



Dentine bonded with CLEARFIL™ Universal Bond Quick.
During polymerization, CLEARFIL™ Universal Bond Quick creates a highly cross-linked polymer network. As a result, the bond exhibits very low water sorption, providing long lasting restorations.

PROCEDURAL FREEDOM

CLEARFIL™ Universal Bond Quick exhibits excellent curing properties, enabling a highly cross-linked polymer network within the adhesive. The result is a strong bond that creates a lasting, durable adhesive layer with exceptionally low water sorption.






Unlike traditional dental adhesives that require waiting time, extensive rubbing and multiple layers in order to deliver an optimum result, CLEARFIL™ Universal Bond Quick simplifies the restorative process, minimising procedural complications, for maximum predictability.

With the introduction of Rapid Bond Technology, application time is greatly reduced benefitting both patient and clinician.

DIRECT COMPOSITE RESTORATIONS*



UNIVERSAL adhesives

	CLEARFIL™ Universal Bond Quick Kuraray Noritake Dental	APPLY with a rubbing motion AND PROCEED	Blowing mild air for more than 5 seconds	Light cure for 10 seconds**
	Scotchbond Universal*** 3M ESPE	Apply and rub it in for 20 seconds	Gentle stream of air for about 5 seconds	Light cure for 10 seconds
	Prime & Bond active*** Dentsply	Apply and slightly agitate for 20 seconds	Dry air for at least 5 seconds	Light cure for 10-20 seconds
	Xeno Select*** Dentsply	Agitate the adhesive for 20 seconds	Dry air for at least 5 seconds	Light cure for 10 seconds
	Adhese Universal*** Ivoclar Vivadent	Scrub for at least 20 seconds	Disperse with compressed air until a glossy, immobile layer results	Light cure for 10 seconds

* Please follow the Instructions for Use for detailed technique and instructions

** 5 seconds for high power LED (Light intensity more than 1500mW/cm²)

*** Trademarks are property of their respective owners

Data compiled from respective manufacturer's instruction for use.

DIRECT COMPOSITE RESTORATIONS*



TOTAL-ETCH adhesives



CLEARFIL™ Universal Bond Quick
Kuraray Noritake Dental

APPLY with a rubbing motion AND PROCEED

Blowing mild air for more than 5 seconds

Light cure for 10 seconds**



Adper Scotchbond 1 XT***
3M ESPE

Apply 2-3 coats, agitate for 15 seconds with gentle agitation

Gently air thin for 5 seconds

Light cure for 10 seconds



OptiBond Solo Plus***
Kerr

Apply for 15 seconds, using light brushing motion

Air thin for 3 seconds

Light cure for 20 seconds



ExiTE F***
Ivoclar Vivadent

Apply and agitate for at least 10 seconds

Disperse to a thin layer with a weak stream of air

Light cure for 10 seconds



Prime&Bond NT***
Dentsply

Apply and remain undisturbed for 20 seconds

Gently drying with clean, dry air from a dental syringe for at least 5 seconds

Light cure for 10 seconds

DIRECT COMPOSITE RESTORATIONS*



SELF-ETCH adhesives



CLEARFIL™ Universal Bond Quick
Kuraray Noritake Dental

APPLY with a rubbing motion AND PROCEED

Blowing mild air for more than 5 seconds

Light cure for 10 seconds**



CLEARFIL™ S3 BOND PLUS
Kuraray Noritake Dental

Apply and leave it in place for 10 seconds

Blowing mild air for more than 5 seconds

Light cure for 10 seconds



Adper Prompt L-Pop***
3M ESPE

Massage it in for 15 seconds, applying pressure. Apply a second coat after dry

Use a gentle stream of air to thoroughly dry the adhesive to a thin film. Again, use a gentle stream of air to thoroughly dry the adhesive to a thin film

Light cure for 10 seconds



OptiBond All-In-One***
Kerr

Apply twice with brushing motion for 20 seconds each time

Dry with gentle air first and then medium air for at least 5 seconds

Light cure for 10 seconds

THIN FILM LAYER

CLEARFIL™ Universal Bond Quick yields a thin film layer of only 5 to 10 µm, ensuring it is esthetically pleasing even in the most demanding anterior restorations. Our innovative new hydrophilic Amide monomers create multiple cross-links, improving the stability of the thin film layer. This delivers an advanced hydrophobic adhesive layer with excellent marginal esthetics.



Before



After





A TRULY UNIVERSAL BOND

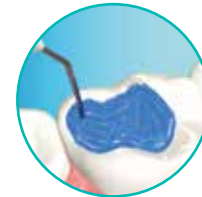
CLEARFIL™ Universal Bond Quick is the one adhesive solution for every practice, whether you're an advocate of total-etch, self-etch or selective-etch techniques. The choice is yours.



Self-etch
(no phosphoric acid)



Selective-etch
(phosphoric acid on enamel)



Total-etch
(phosphoric acid on enamel and dentine)

CLEARFIL™ Universal Bond Quick offers maximum versatility by bonding directly to dentine, enamel, metals, zirconia and lithium disilicate restorative materials. Incorporating silane, activates CLEARFIL™ Universal Bond Quick as a pretreatment surface primer for indirect materials such as zirconia, glass ceramics, metals and for intra oral repairs. CLEARFIL™ Universal Bond Quick can be mixed with CLEARFIL™ DC Activator to become a dual-cure adhesive, thereby making this product truly “universal” for all etching and restorative needs. CLEARFIL™ Universal Bond Quick also initiates our Touch Cure Technology when used in combination with CLEARFIL™ DC CORE PLUS or PANAVIA™ SA Cement Plus.



Direct



Core Build-Up



Indirect

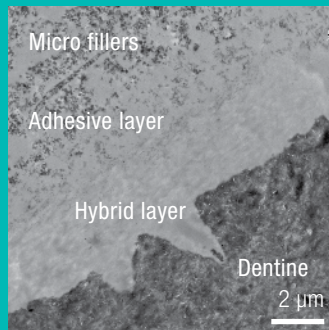


Repair

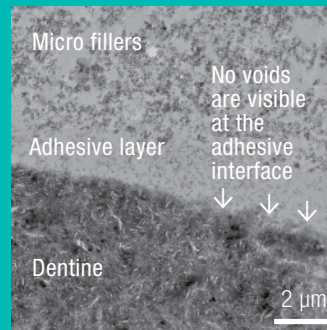
RESEARCH

Optimal Dentine Bonding

Dentine is a challenging substrate to bond to. Our Rapid Bond Technology ensures quick and effective bond penetration to all tooth substrates, especially dentine. CLEARFIL™ Universal Bond Quick delivers a complete, void-free, dentine seal. The below TEM's highlight a superior interaction between CLEARFIL™ Universal Bond Quick and hydroxyapatite in both total and self-etch modes.



Total-etch mode TEM



Self-etch mode TEM

UCL-DRIM-STUDY

Bonding effectiveness of a novel bonding agent (CLEARFIL™ Universal Bond Quick) to dentine

In this study the bond strength was tested between human dentine and composite. Shear bond strength of the bonding interface was measured. Three universal all-in-one and two self-etch 2-component bonding systems were tested. Samples were stored in distilled water for 24 hours at 37°C.

Study performed by UCL_DRIM, Louvain la Neuve, Belgium, 2016

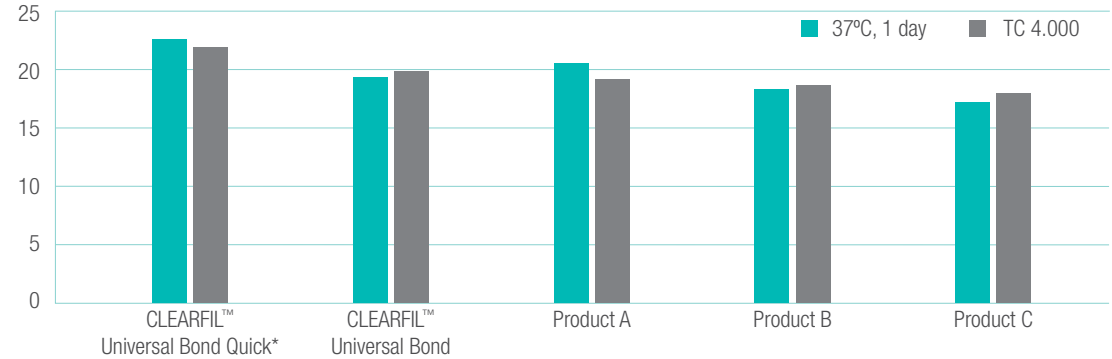
“Among the all-in-one universal alternatives, the new CLEARFIL™ Universal Bond Quick technology appears equally efficient despite the absence of waiting time after application, making it a more user-friendly and more convenient option than its competitors.”

Dr. Julian G. Leprince, Cliniques universitaires Saint-Luc UCL, Brussels

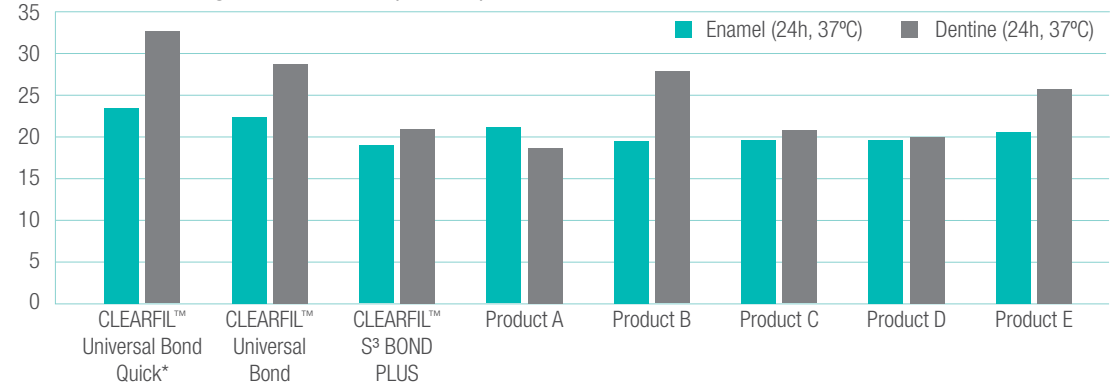
BOND STRENGTH

To enamel (total-etch) and to enamel and dentine (self-etch)

MPa Tensile bond strength to bovine enamel (total-etch)



MPa Shear bond strength to bovine teeth (self-etch)



Kuraray Noritake Dental Inc. (Ultradent Method)

*In this research, CLEARFIL™ Universal Bond Quick is applied with a rubbing motion for 3 seconds.

WIDE INDICATION RANGE

- ✓ Direct restorations using light-cured composite resin
- ✓ Cavity sealing as a pretreatment for indirect restorations
- ✓ Treatment of exposed root surfaces
- ✓ Treatment of hypersensitive teeth
- ✓ Intraoral repairs of fractured restorations
- ✓ Post cementation and core build-ups
- ✓ Cementation of indirect restorations

TECH SPECS

Film thickness:	5-10 μm
Film thickness with CLEARFIL™ DC Activator:	<1 μm
Working time with light blocking plate:	7 min.
Working time with CLEARFIL™ DC Activator:	90 sec.

Application time for direct restoration

	Self-etch	Total-etch/ Selective-etch
Phosphoric acid etching	-	10 sec.
Bond application	Apply with rubbing motion; No waiting time needed	Apply with rubbing motion; No waiting time needed
Air-dry	5 sec.	5 sec.
Light cure	10 sec.*	10 sec.*
Total application time	15 sec.	25 sec.

*5 sec. for high power LED (Light intensity: more than 1500 mW/cm²)



PRODUCT RANGE

CLEARFIL™ Universal Bond Quick BOTTLE STANDARD KIT

#282400 Bottle (5 ml),
K-ETCHANT Syringe (3 ml),
Applicator Brush (x 50 pcs),
Needle Tip (x 20 pcs),
Mixing Dish, Light Blocking Plate



CLEARFIL™ Universal Bond Quick BOTTLE REFILL

#282402 Bottle (5 ml)



CLEARFIL™ Universal Bond Quick BOTTLE VALUE PACK

#282403 Bottle (3 x 5 ml)



CLEARFIL™ Universal Bond Quick UNIT DOSE STANDARD PACK

#282404 Unit Dose (50 pcs x 0.1 ml),
K-ETCHANT Syringe (3 ml),
Applicator Brush (x 50 pcs),
Needle Tip (x 20 pcs)



CLEARFIL™ DC ACTIVATOR

#282250 1 bottle (4 ml)



K-ETCHANT SYRINGE

#282252 K-ETCHANT Syringe (2 x 3 ml),
Needle Tip (x 40 pcs)

Needle Tips

#282253 Needle Tip (x 20 pcs)



MANUFACTURER

Kuraray Noritake Dental Inc.
OTE Center Bldg.
1-1-3 Otemachi
Chiyoda-ku, Tokyo 100-0004
Japan

Tel +81 (0)3 6701 1710
Fax +81 (0)3 6701 1805
Website www.kuraraynoritake.com



Kuraray Noritake Dental Inc.

2-28 Kurashiki-cho, Tainai, Niigata 959-2653, Japan

DISTRIBUTOR (AUST)

Henry Schein Halas
Phone 1300 65 88 22
Fax 1300 65 88 10
Email Customer.Care@henryschein.com.au
Website www.henryschein.com.au

DISTRIBUTOR (NZ)

Henry Schein Dental
Phone 0800 808 855
Fax 0508 808 555
Email orders@henryschein.co.nz
Website www.henryschein.co.nz