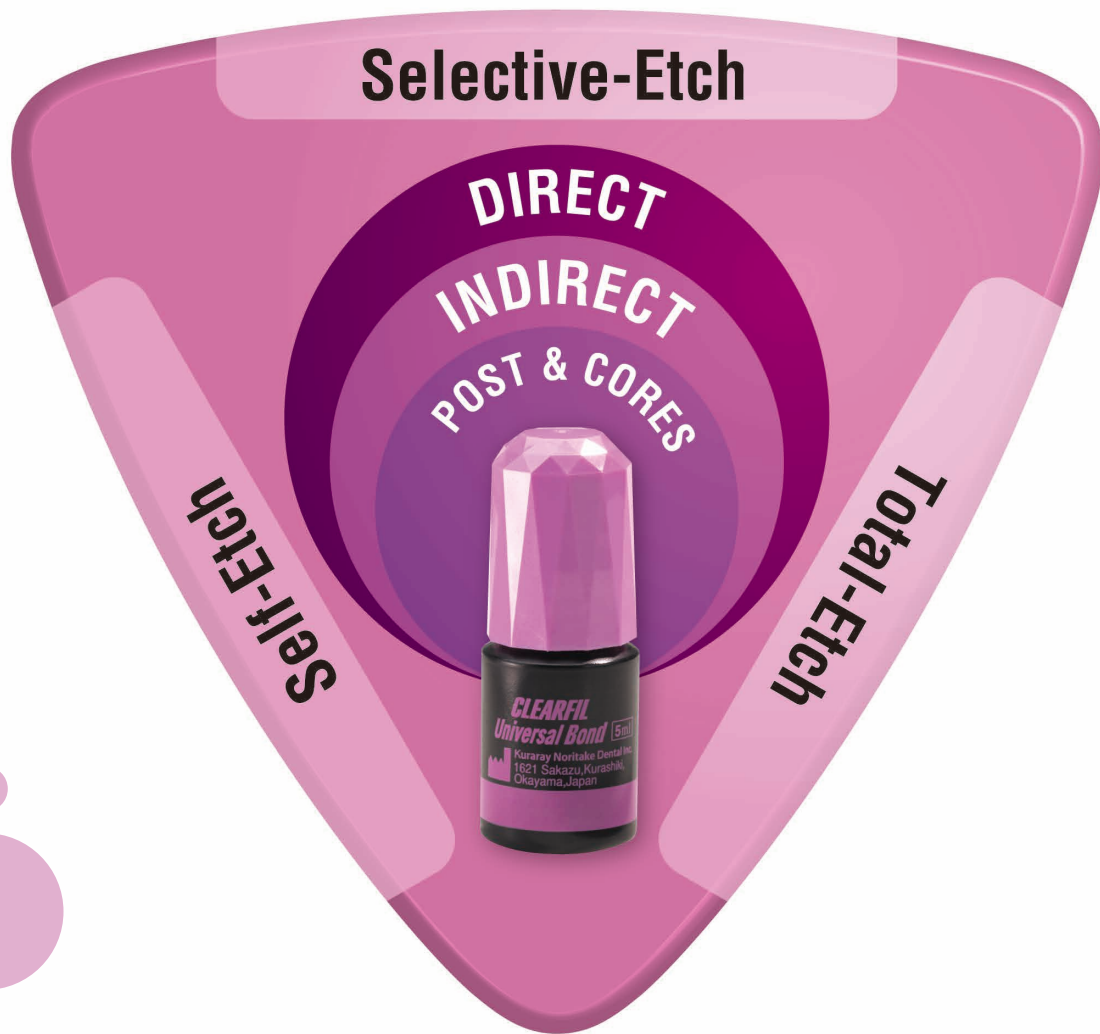




CLEARFIL™ Universal Bond



WITH UNIVERSAL CLINICAL INDICATIONS



CLEARFIL™ Universal Bond

For all your etching and restorative needs

CLEARFIL™ Universal Bond is a single-component, light-cure bonding agent indicated for both direct and indirect restorations in combination with three etching techniques (Total-Etch, Self-Etch and Selective-Etch).

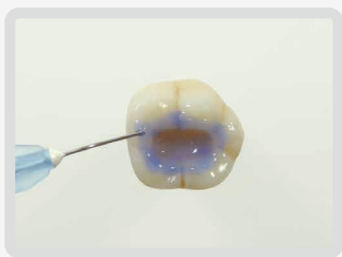
It's also indicated for the surface treatment of zirconia & silica-based glass ceramics.

CLEARFIL™ Universal Bond

■ FOR ALL YOUR ETCHING AND RESTORATIVE NEEDS

Total-Etch, Self-Etch and Selective-Etch Techniques can be used based on Kuraray's original MDP technology.

Total-Etch



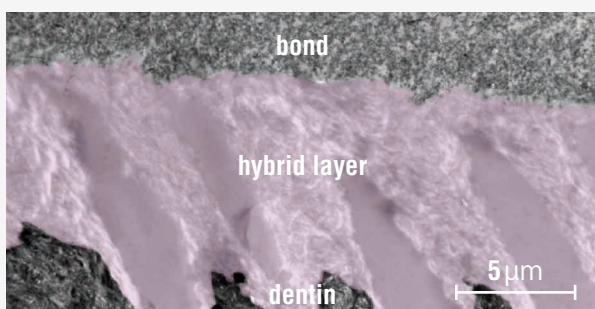
Self-Etch



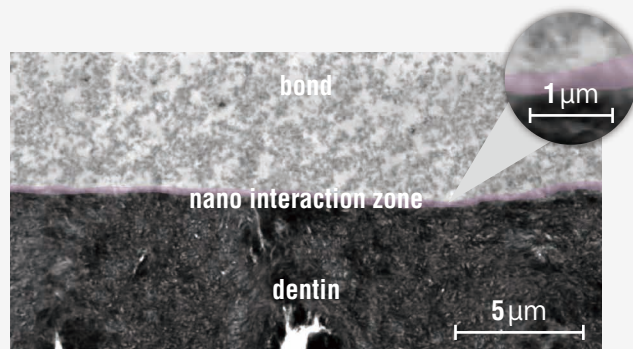
Selective-Etch



These images below show a good interaction between MDP and hydroxyapatite in Total and Self-Etch mode.



Total-Etch MODE 32.5 MPa after 24hours



Self-Etch MODE 36.7 MPa after 24hours

■ Universal-Use with high performance

CORE BUILD-UP with Glass Fiber Post



CLEARFIL
DC CORE PLUS

1 Post Pretreatment for Glass Fiber Post



No additional primer or activator is needed when used with CLEARFIL DC CORE PLUS

2 Tooth Pretreatment Choose either etching procedure

a. Self-Etch

Move to section 3

b. Total-Etch*¹⁾

10sec.

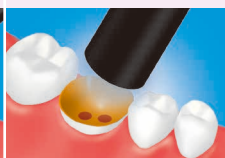
c. Selective-Etch*²⁾

10sec.

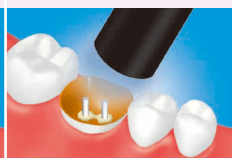
3 Apply BOND and rub, Dry by blowing mild air and paper point



4 Light-cure



5 Placing the post and core build-up



Post cementation and core build-up using CLEARFIL DC CORE PLUS according to the manufacturer's instructions

INDIRECT for Metal oxides (e.g. Zirconia)



PANAVIA
SA CEMENT

1 Sand blast with alumina powder, then ultrasonic clean and dry



2 Tooth Pretreatment Choose either etching procedure

a. Self-Etch

Move to section 3

b. Total-Etch*¹⁾

10sec.

c. Selective-Etch*²⁾

10sec.

3 Apply BOND and rub Dry by blowing mild air



Light-curing of bond is an option for optimal performance.

4 Cementation using PANAVIA SA CEMENT according to the manufacturer's instructions



*¹⁾ Apply a phosphoric acid to the entire cavity (enamel and dentin), then rinse and dry

*²⁾ Apply a phosphoric acid to the uncut and/or cut enamel, then rinse and dry

INTRAORAL REPAIR of fracture restoration



No additional primer is needed when used for intraoral repair

CLEARFIL™ Universal Bond can be used adhere to almost all material* w/o additional primers; no need for separate silane coupling agent.



*Enamel, dentin, glass-ceramics, composites, precious metals, metals, and metal oxides such as zirconia.

CLEARFIL™ DC Activator



To provide a wide application with CLEARFIL™ DC Activator

CLEARFIL™ Universal Bond can be mixed with CLEARFIL™ DC Activator to become a dual-cure adhesive which can be used with self/dual-cured resin cement or core material.

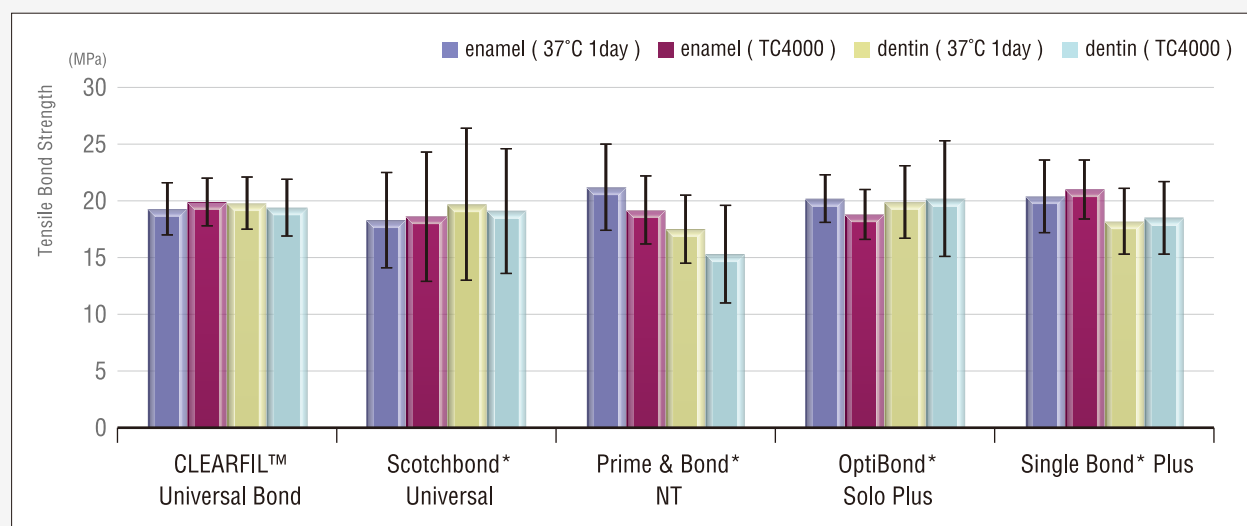
*Working time will be shortened dramatically when not light-curing the mixture on the adhered surface.

*The addition of "CLEARFIL™ DC Activator" to CLEARFIL™ Universal Bond is not required when using with "CLEARFIL™ DC CORE PLUS" or "PANAVIA™ SA CEMENT".

Scientific Data

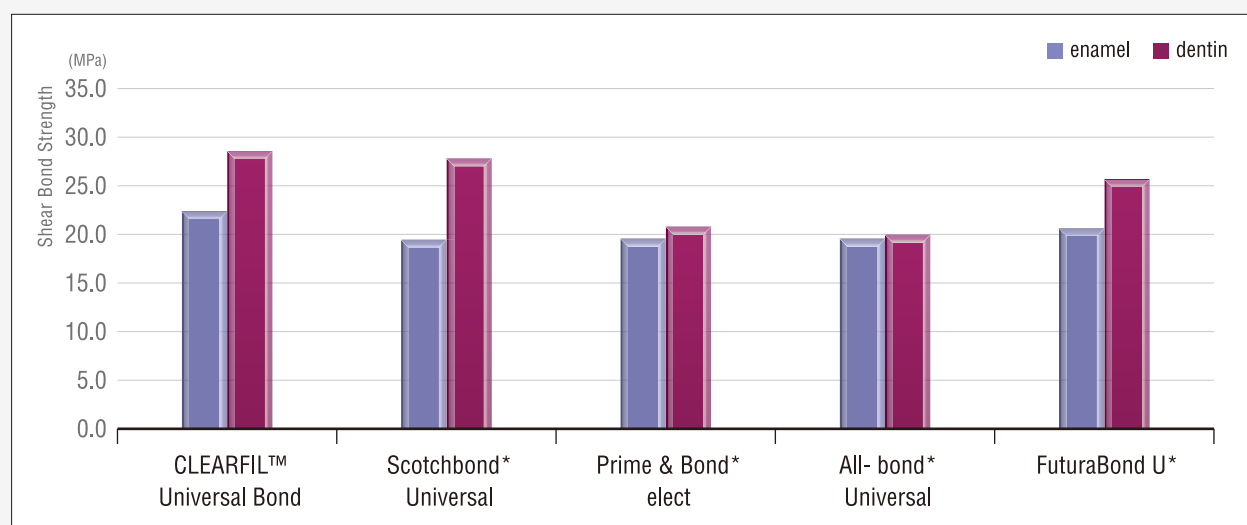
Bond Strength to Enamel and Dentin

Total-Etch mode (Tensile Bond Strength)



*Not a trademark of Kuraray Co.,Ltd Source: Kuraray Noritake Dental Inc.

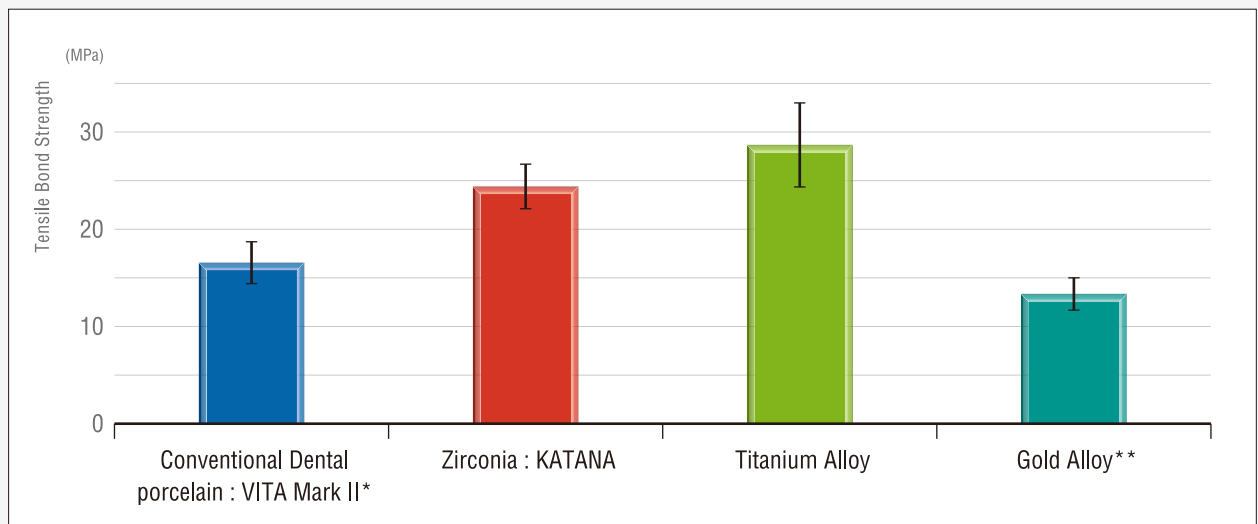
Self-Etch mode (Shear Bond Strength)



CLEARFIL™ Universal Bond

Shear bond strength to various material

Bond strength to various materials



These surfaces are treated by CLEARFIL Universal bond *Pretreatment by K-Etchant Gel 5sec, wash and dry. Source: Kuraray Noritake Dental Inc.

INDICATIONS

- Direct restorations using light-cured composite resin
- Cavity sealing as a pretreatment for indirect restorations
- Treatment of exposed root surfaces
- Treatment of hypersensitive teeth
- Intraoral repairs of fractured restorations
- Post cementation and core build-ups
- Cementation of inlays, onlays, crowns, bridges and veneers

Bottle and Unit Dose

CLEARFIL™ Universal Bond is available in bottle and unit dose delivery.



In 1926, Kuraray was established in Kurashiki, Japan, where the industrial production of viscose rayon began. Though intensive research and development the company succeeded in building up extensive expertise and technological strength in the fields of polymer chemistry, synthetic chemistry and chemical engineering.

Kuraray entered the field of dental materials in 1973.

The mission of Kuraray was to respond precisely and thoroughly to the needs of the dental profession with reliable products of superior quality. In 1978, Kuraray introduced the first bonding system to the market:

CLEARFIL BOND SYSTEM F, the start of the age of adhesive dentistry. At the same time, the company developed the "total-etch technique" for enamel and dentin. Over four decades, Kuraray Noritake Dental Inc.

continues to bring forth innovative, quality products to meet the demands of a continuously changing dental profession.



Kuraray Noritake Dental Inc.

1621 Sakazu, Kurashiki, Okayama 710-0801, Japan

Website www.kuraraynoritake.com

- Before using this product, be sure to read the Instructions for Use supplied with the product.
- The specifications and appearance of the product are subject to change without notice.
- Printed color can be slightly different from actual color.

"CLEARFIL" and "PANAVIA" are trademarks of KURARAY CO., LTD