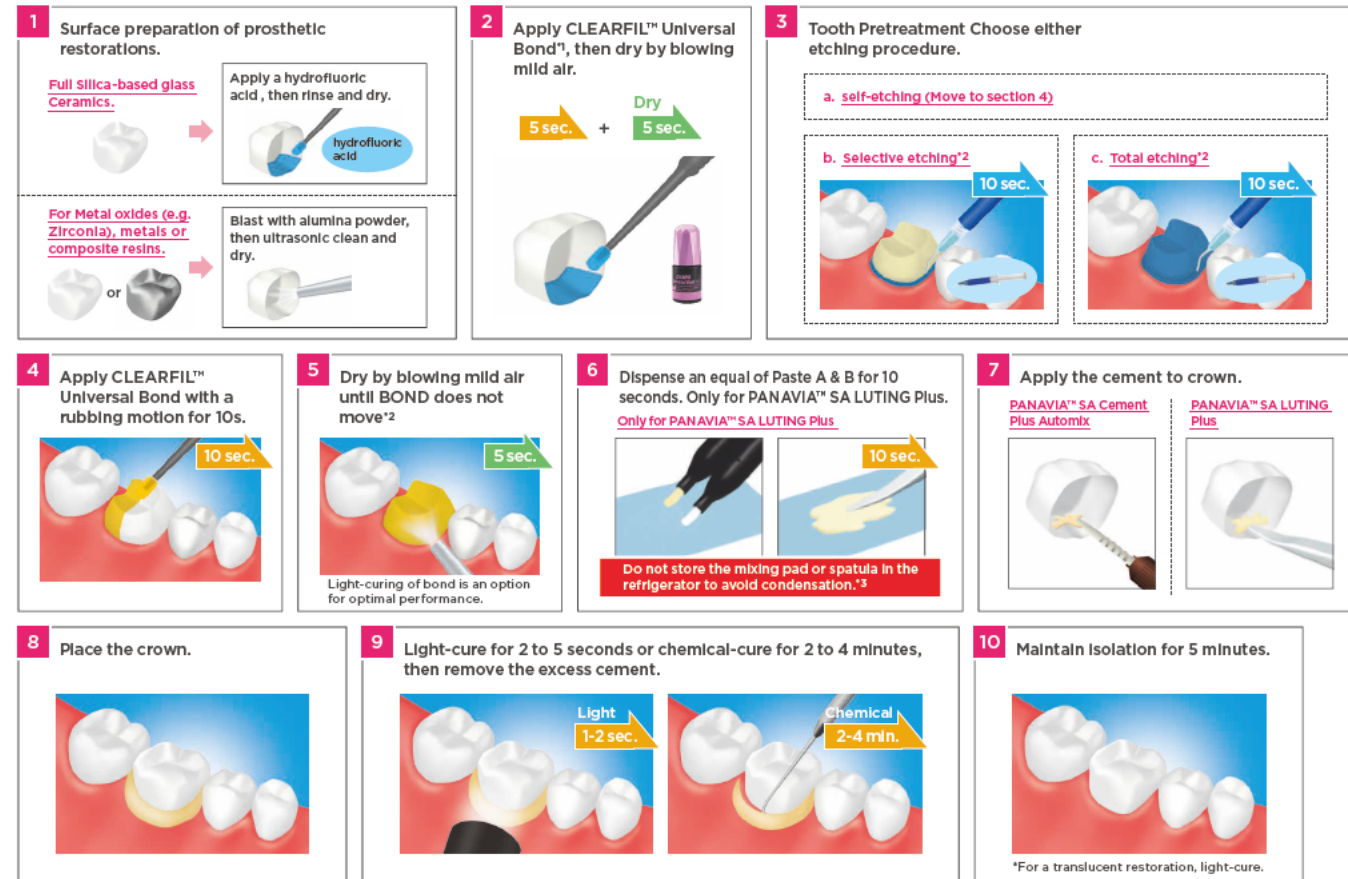


The usage of CLEARFIL™ Universal Bond in combination with PANAIA™ SA Cement Plus Automix / PANAIA™ SA LUTING Plus enhances the bond strength to the tooth structure.



Procedure for Crowns Cementations

Clean and dry the tooth surface, and then trial fit the prosthetic restoration.



- *1 Apply BOND to metal oxides or metals as an option.
 *2 Use a vacuum aspirator to prevent BOND from scattering.
 *3 The presence of water can shorten working time.

kuraray

Noritake

CLEARFIL™ Universal Bond

PANAIA™ SA LUTING Plus

PANAIA™ SA Cement Plus Automix

A POWERFUL COMBINATION

UNLEASH THE FULL POTENTIAL OF KURARAY'S
SELF-ADHESIVE CEMENTS



- Before using this product, be sure to read the Instructions for Use supplied with the product.
- The specifications and appearance of the product are subject to change without notice.
- Printed color can be slightly different from actual color.

"PANAIA" and "CLEARFIL" are trademarks of KURARAY CO., LTD
 "KATANA" is a trademark of NORITAKE CO., LIMITED.

Kuraray Noritake Dental Inc.

1621 Sakazu, Kurashiki, Okayama 710-0801, Japan

Website www.kuraraynoritake.com

Kuraray Noritake Dental Inc.

www.kuraraynoritake.com

CLEARFIL™ Universal Bond



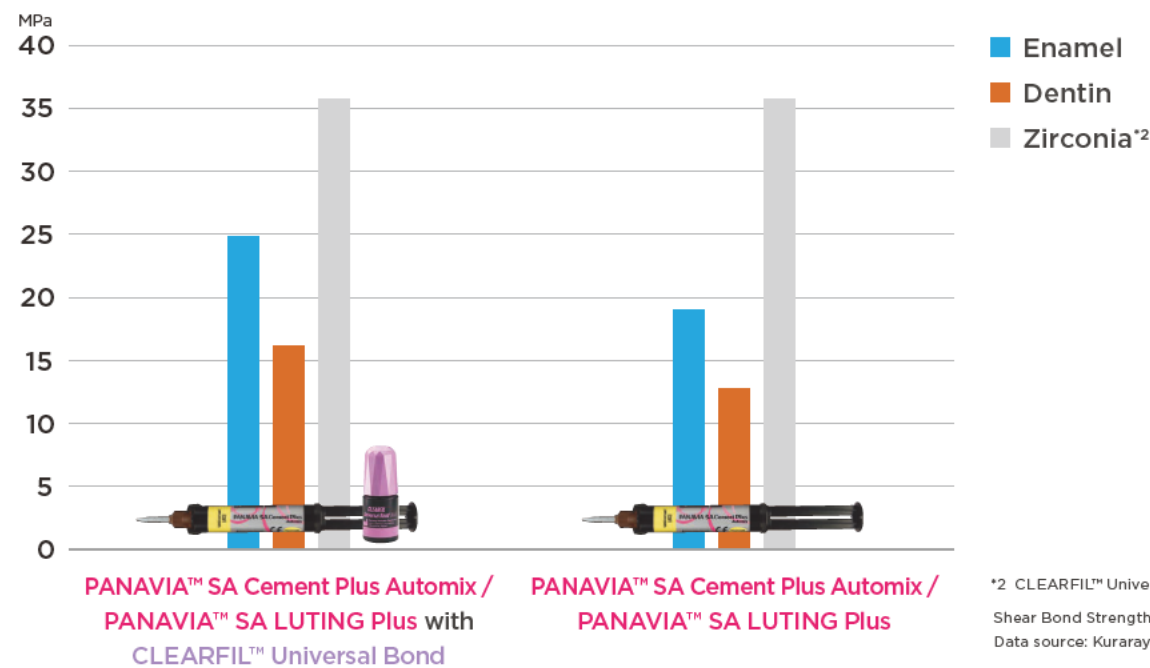
A POWERFUL COMBINATION



Enhancing Bond Strength to Dentin and Enamel

When PANAVIA™ SA Cement Plus Automix / PANAVIA™ SA LUTING Plus is used in conjunction with CLEARFIL™ Universal Bond, there is a 35% increase in bond strength to the tooth structure. By using these two products together^{*1}, it is ideal for your tougher bond cases (ex. short clinical preparations; adhesion bridges). The MDP monomer (both products) provides a stronger result than obtained from traditional GI or RMGI cement.

^{*1} Use of CLEARFIL™ Universal Bond.



^{*2} CLEARFIL™ Universal Bond is not applied.

Shear Bond Strength of Cementing Systems (24h, 37°C)
Data source: Kuraray Noritake Dental Inc.

PANAVIA™ SA Cement Plus Automix / PANAVIA™ SA LUTING Plus Clean: Fast & Easy Clean-Up



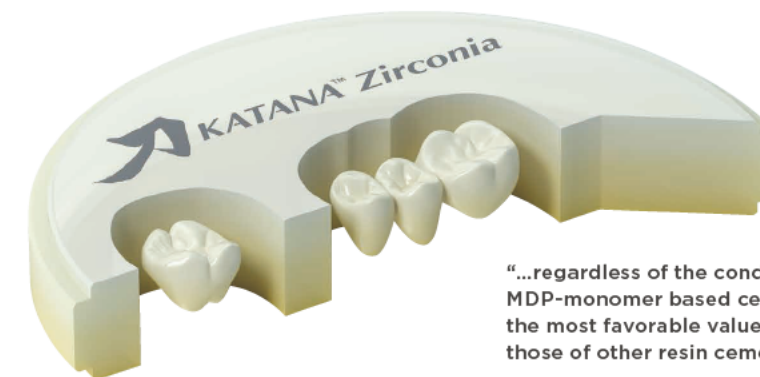
Easy clean-up that is gentle to the gums and minimizes the risk of accidental ingestion.

When the cement is used in combination with CLEARFIL™ Universal Bond, the setting time of the excess cement will be faster (1 to 2 seconds).

PANAVIA™ SA LUTING Plus / PANAVIA™ SA Cement Plus Automix

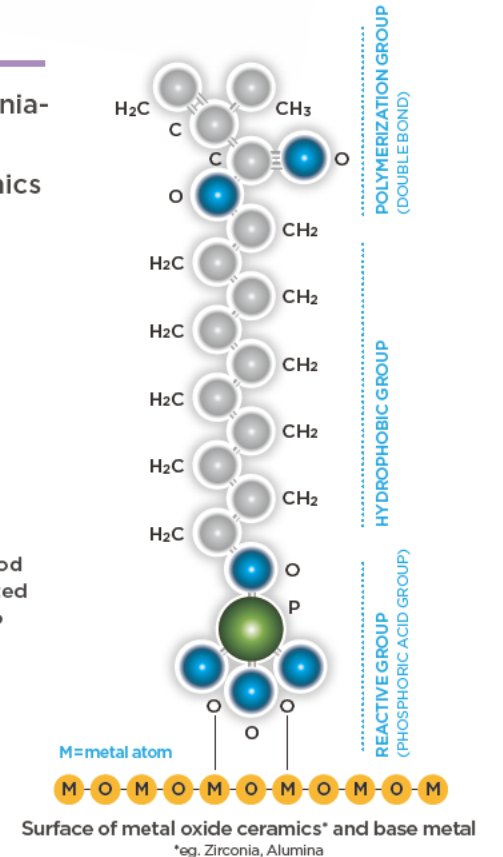
Outstanding Adhesion to Zirconia

The MDP monomer provides an excellent chemical bonding to zirconia-based ceramics. The phosphate ester group of the MDP monomer results in chemical bonding to metal oxides, zirconia-based ceramics and other ceramics^{*1}.



^{*1} Use of CLEARFIL™ Universal Bond is an option for Zirconia adhesion.

^{*2} Systematic Review of Adhesion Studies on Zirconia M. Özcan, J Dent Res Vol #90 A: 374, 2011
www.iadr.org



Other Original Features

Versatile for Direct/Indirect Restoration - CLEARFIL™ Universal Bond

All Etching Techniques



Self-etch
No phosphoric acid

Selective-etch
Phosphoric acid on enamel

Total-etch
Phosphoric acid on enamel and dentin

Wide Clinical Indications



Direct Restoration

Post Cementation / Core Build-Up

Cementation Indirect Restoration

Intraoral Repair