

The usage of CLEARFIL™ TRI-S BOND Universal in combination with PANA VIA™ SA Cement Plus Automix / PANA VIA™ SA LUTING Plus enhances the bond strength to the tooth structure.



## Procedure for Crowns Cementations

Clean and dry the tooth surface, and then trial fit the prosthetic restoration.

- 1 Surface preparation of prosthetic restorations.**  
 Full Silica-based glass Ceramics: Apply a hydrofluoric acid, then rinse and dry.  
 For Metal oxides (e.g. Zirconia), metals or composite resins: Blast with alumina powder, then ultrasonic clean and dry.
- 2 Apply CLEARFIL™ TRI-S BOND Universal<sup>1</sup>, then dry by blowing mild air.**  
 5 sec. + 5 sec.
- 3 Tooth Pretreatment Choose either etching procedure.**  
 a. self-etching (Move to section 4)  
 b. Selective etching<sup>2</sup> 10 sec.  
 c. Total etching<sup>2</sup> 10 sec.
- 4 Apply CLEARFIL™ TRI-S BOND Universal with a rubbing motion for 10s.**
- 5 Dry by blowing mild air until BOND does not move<sup>2</sup>**  
 5 sec.  
 Light-curing of bond is an option for optimal performance.
- 6 Dispense an equal of Paste A & B for 10 seconds. Only for PANA VIA™ SA LUTING Plus.**  
 Only for PANA VIA™ SA LUTING Plus  
 Do not store the mixing pad or spatula in the refrigerator to avoid condensation.<sup>3</sup>
- 7 Apply the cement to crown.**  
 PANA VIA™ SA Cement Plus Automix  
 PANA VIA™ SA LUTING Plus
- 8 Place the crown.**
- 9 Light-cure for 2 to 5 seconds or chemical-cure for 2 to 4 minutes, then remove the excess cement.**  
 Light 1-2 sec. / Chemical 2-4 min.
- 10 Maintain isolation for 5 minutes.**  
 \*For a translucent restoration, light-cure.

\*1 Apply BOND to metal oxides or metals as an option.  
 \*2 Use a vacuum aspirator to prevent BOND from scattering.  
 \*3 The presence of water can shorten working time.

# CLEARFIL™ S<sup>3</sup> BOND Universal [ CLEARFIL™ TRI-S BOND Universal ]

## PANA VIA™ SA LUTING Plus

## PANA VIA™ SA Cement Plus Automix

A POWERFUL COMBINATION  
 UNLEASH THE FULL POTENTIAL OF KURARAY'S  
 SELF-ADHESIVE CEMENTS



# PANAIA™ SA Cement Plus / PANAVIA™ SA LUTING Plus Automix

# CLEARFIL™ S<sup>3</sup> BOND Universal [ CLEARFIL™ TRI-S BOND Universal ]

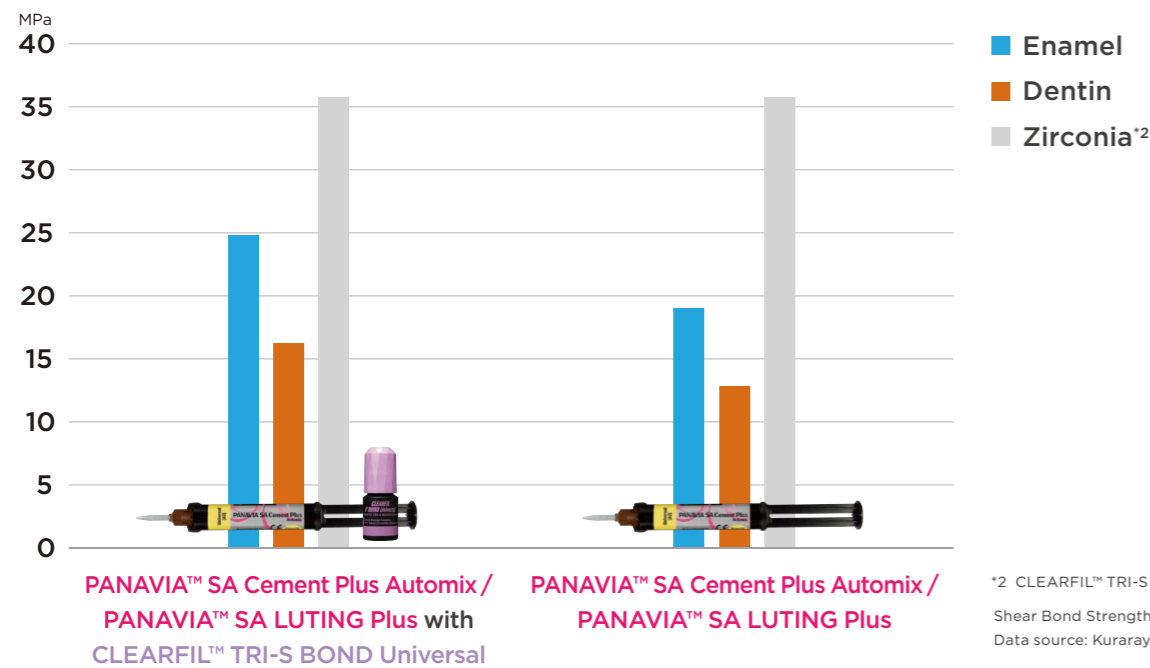


A POWERFUL COMBINATION

## Enhancing Bond Strength to Dentin and Enamel

When PANAVIA™ SA Cement Plus Automix / PANAVIA™ SA LUTING Plus is used in conjunction with CLEARFIL™ TRI-S BOND Universal, there is a 35% increase in bond strength to the tooth structure. By using these two products together<sup>1</sup>, it is ideal for your tougher bond cases (ex. short clinical preparations; adhesion bridges). The MDP monomer (both products) provides a stronger result than obtained from traditional GI or RMGI cement.

<sup>1</sup> use of CLEARFIL™ TRI-S BOND Universal is optional.



<sup>2</sup> CLEARFIL™ TRI-S BOND Universal is not required. Shear Bond Strength of Cementing Systems (24h, 37°C) Data source: Kuraray Noritake Dental Inc.

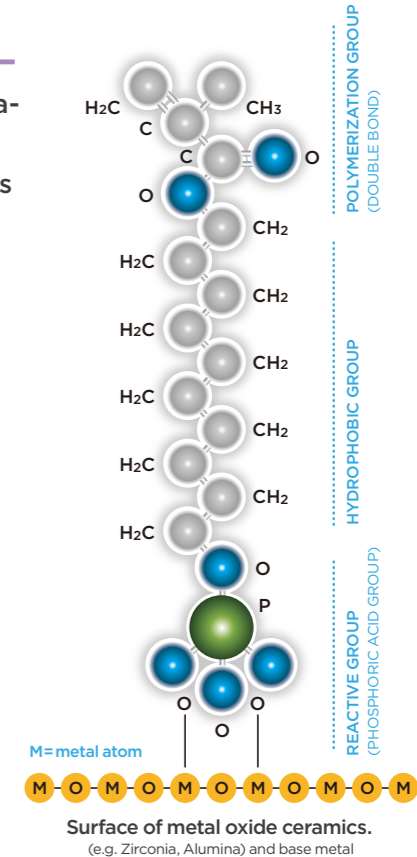
## Outstanding Adhesion to Zirconia

The MDP monomer provides an excellent chemical bonding to zirconia-based ceramics. The phosphate ester group of the MDP monomer results in chemical bonding to metal oxides, zirconia-based ceramics and other ceramics<sup>1</sup>.



"...regardless of the conditioning method MDP-monomer based cements presented the most favorable values compared to those of other resin cements."<sup>2</sup>

<sup>1</sup> Use of CLEARFIL™ TRI-S BOND Universal is not required for Zirconia adhesion. <sup>2</sup> Systematic Review of Adhesion Studies on Zirconia M. Özcan, J Dent Res Vol #90 A: 374, 2011 www.iadr.org



## Other Original Features

### Versatile for Direct/Indirect Restoration - CLEARFIL™ TRI-S BOND Universal

#### All Etching Techniques

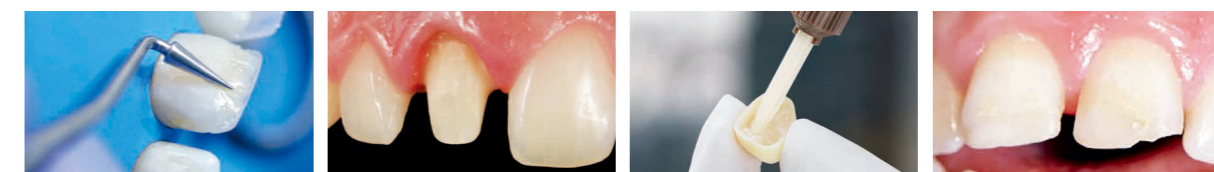


**Self-etch**  
No phosphoric acid

**Selective-etch**  
Phosphoric acid on enamel

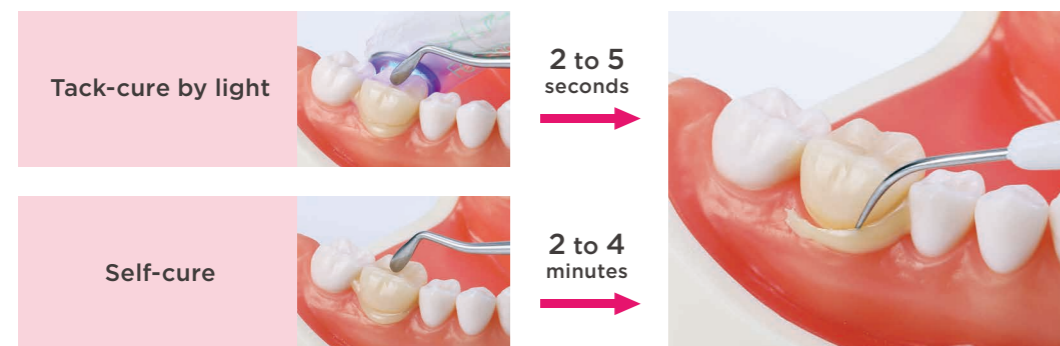
**Total-etch**  
Phosphoric acid on enamel and dentin

#### Wide Clinical Indications



**Direct Restoration**      **Post Cementation/ Core Build-Up**      **Cementation Indirect Restoration**      **Intraoral Repair**

### PANAIA™ SA Cement Plus Automix / PANAVIA™ SA LUTING Plus Clean: Fast & Easy Clean-Up



Easy clean-up that is gentle to the gums and minimizes the risk of accidental ingestion.

When the cement is used in combination with CLEARFIL™ TRI-S BOND Universal, the setting time of the excess cement will be faster (1 to 2 seconds).