

In 1926, Kuraray was established in Kurashiki, Japan, where the industrial production of viscose rayon began. Though intensive research and development the company succeeded in building up extensive expertise and technological strength in the fields of polymer chemistry, synthetic chemistry and chemical engineering.

Kuraray entered the field of dental materials in 1973. The mission of Kuraray was to respond precisely and thoroughly to the needs of the dental profession with reliable products of superior quality. In 1978, Kuraray introduced the first bonding system to the market: CLEARFIL™ BOND SYSTEM F, the start of the age of adhesive dentistry. At the same time, the company developed the “total-etch technique” for enamel and dentin. Over four decades, Kuraray Noritake Dental Inc. continues to bring forth innovative, quality products to meet the demands of a continuously changing dental profession.



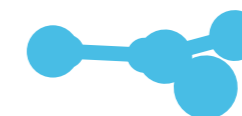
CLEARFIL MAJESTY™ ES-2

VITA approved Shade Concept

- Read the Instructions for Use supplied with the products before use.
- The specifications and appearance of the product are subject to change without notice.

Ote Center Bldg., 1-1-3, Otemachi, Chiyoda-ku, Tokyo 100-0004
<http://www.kuraraynoritake.com/ANZ>

“CLEARFIL” and “CLEARFIL MAJESTY” are trademarks of KURARAY Co., Ltd.



JUST BLENDING INTO NATURE

JUST BLENDING INTO NATURE

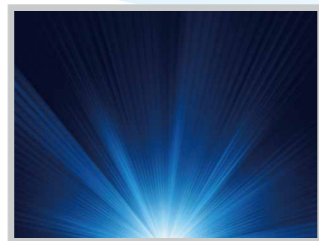
CLEARFIL MAJESTY™ ES-2 is a light-cure, radiopaque restorative material which provides accurate color matching, high polishability and excellent physical properties, making it ideal for both anterior and posterior restorations. It is formulated with optimal viscosity, assuring easy handling and placement. It is packaged in traditional syringes or Pre-loaded tips (PLTs). The "brightness / value" - based unique shade taking system of the CLEARFIL MAJESTY™ ES-2 Shade guide provides shade taking options for single (Classic) and dual-(Premium) shade layering for highly esthetic restorations.

Shade technologies

CLEARFIL MAJESTY™ ES-2 has five Biomimetic characteristics to realize the harmony with the natural tooth.



Fluorescence



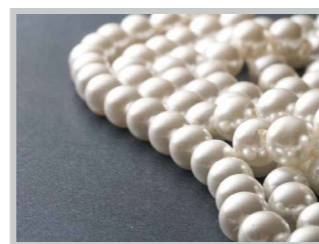
Light diffusion



Transparency



Opacity



Opalescence

Handling technologies

Versatile usage

CLEARFIL MAJESTY™ ES-2 is a nano-hybrid composite, ideal for anterior and posterior use.

Enamel paste viscosity

The enamel paste viscosity was designed to work very precisely. Adapting the enamel paste to a prepared bevel or cervical dentin can be done with your modeling instrument or brush.

Dentin paste handling

In order to make the paste non-sticky, we optimized the monomer type and composition.

Long working time

CLEARFIL MAJESTY™ ES-2 has a long working time of 4.5 minutes under ambient lightning. Even if you keep your operating light on the restoration, you will have enough time to layer the paste.

Shade guide

New intuitive Shade guide
6 shades are exposed, and one tab includes 3 shades.

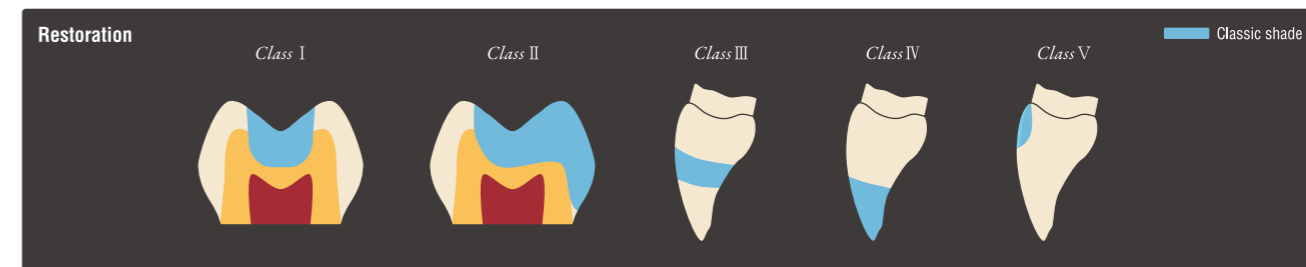


Shade System

Classic : Single-shade technique by VITA Approved Shades

Layering method	Shade category	Shade																
		XW	W	B1	A1	B2	D2	A2	C1	C2	A3	D3	B3	A3.5	B4	C3	A4	C4
Single-shade	Classic																	

Other shades : KA6 has the lowest lightness in Classic shades.



Premium : Dual-shade technique by VITA Approved Concept

- Biomimetic layering system
- Dentin replaced with a Dentin shade and Enamel with Enamel shade

Layering method	Shade category	Shade															
		XW	W	B1	A1	B2	D2	A2	C1	C2	A3	D3	B3	A3.5	B4	C3	A4
Dual-shade	Premium	Enamel		XWE	WE	A1E		A2E		A3E		A3.5E		A4E			
	Dentin	XWD	WD	A1D		A2D		A3D		A3.5D		A4D					

Other shades : Translucent shades can be used for fine characterization of the restoration.



Clinical case
Works with Single-shade (Classic)



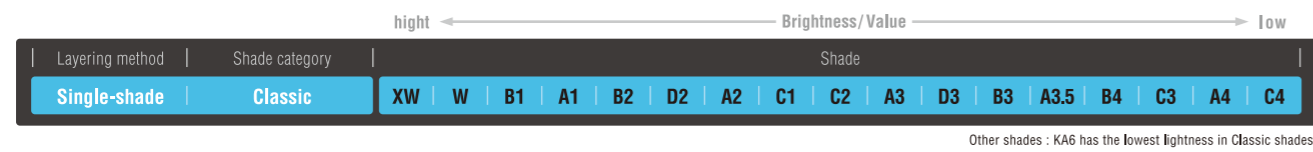
Courtesy of Dr. Hirofumi Tashiro, Japan

Clinical case
Works with Dual-shade (Premium)

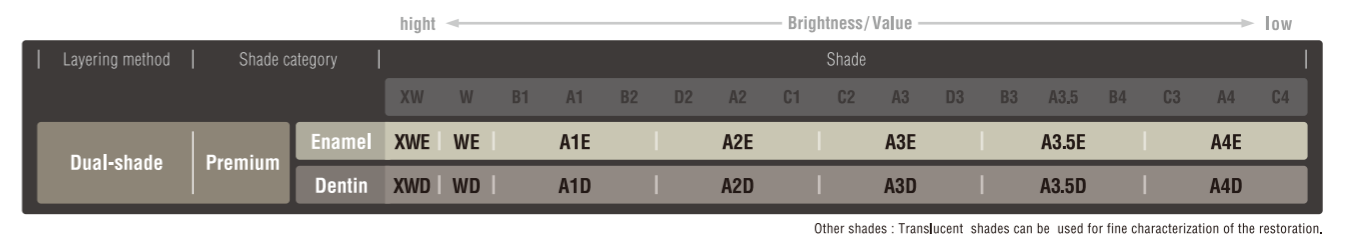


Courtesy of Dr. Koken Serhat

Classic : Single-shade technique by VITA Approved Shades



Premium: Dual-shade technique by VITA Approved Concept



Shade-taking

Step 1 :
Select the closest brightness/value tab from 6 exposed tab options of the Shade guide.

Step 2 :
Pull out the chosen tab from the holder and select the corresponding shade.

Shade-taking
Select the closest brightness/value tab from 6 exposed tab options of the Shade guide. For teeth lighter than W shade, pull-out the tab for XW shade taking.

Restoration

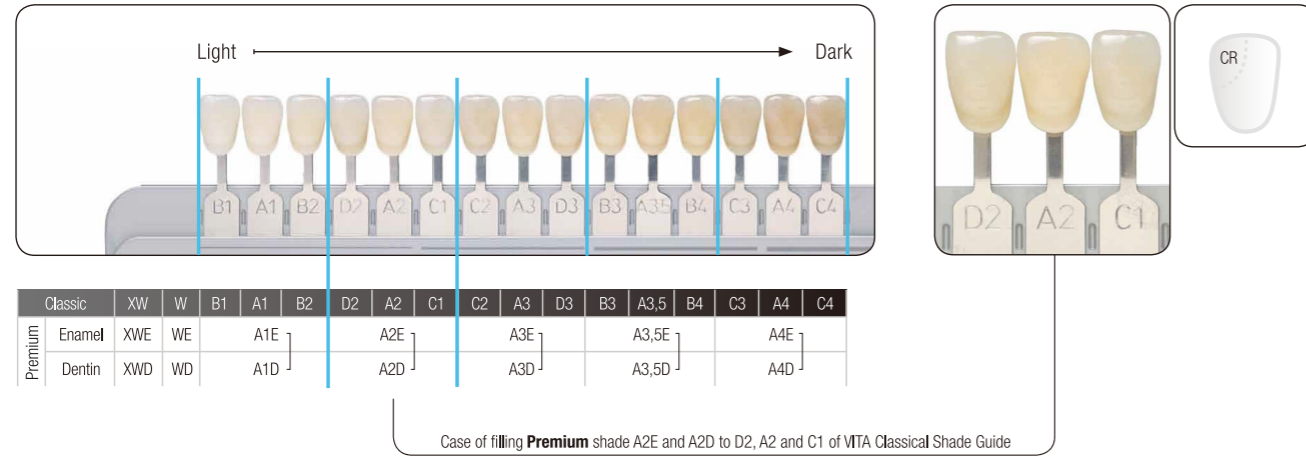
- Select the corresponding pastes of Premium shades(Enamel/Dentin). For example, when A1 tab is chosen, then select A1E and A1D shades.
- Replace dentin space with a respective Dentin shade, and enamel space with a respective Enamel shade.

Impressive Shade Coverage

One Premium shade combination now covers three VITA Classical shades.

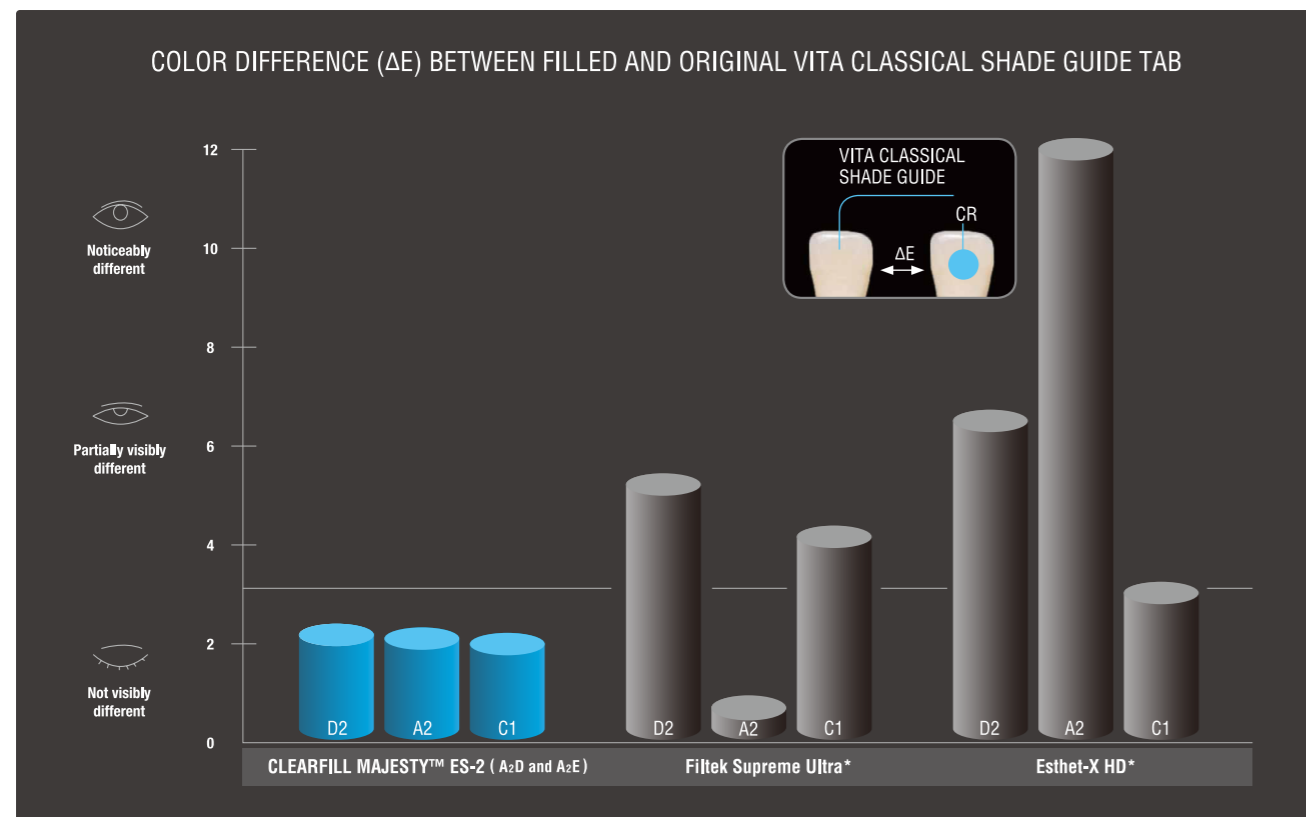
It's hard to believe, but with our esthetic composite concept you are also able to cover three VITA shades with just one Premium enamel and dentin shade combination, such as A1E and A1D. This is possible due to the creation of brightness-based shade groups based on three shades.

If you match three teeth in the A2 group in a week, you can use A2E and A2D to restore a C1 tooth on Monday, perhaps a D2 tooth on Wednesday and an A2 tooth on Thursday. Isn't that just unbelievable? And you do not need any complicated shade recipe to make it happen. Just copy nature's two layers.



Study -Dual Shade Technique-

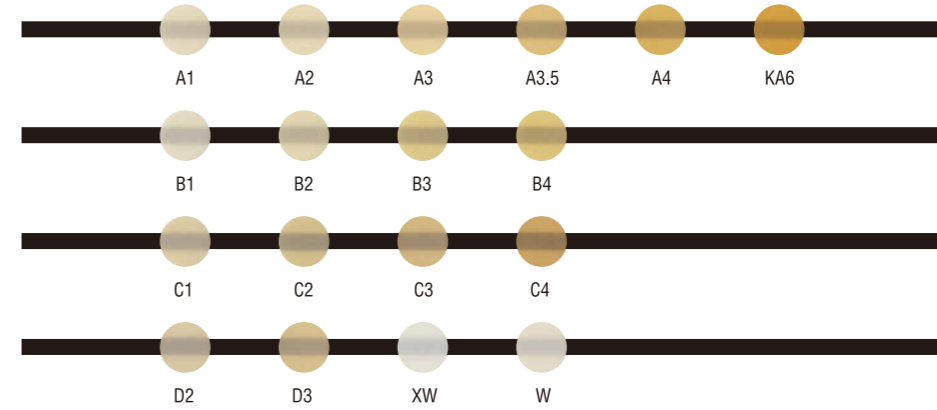
In this study, the centers of three VITA Classical Shade Guide tabs (D2, A2, C1) were restored according to the shade instructions of three manufacturers. With the A2E and A2D shade combination, Kuraray Noritake Dental's CLEARFIL MAJESTY™ ES-2 proved to match not only the A2 shade but also the D2 and C1 shades. All three tabs, restored with CLEARFIL MAJESTY™ ES-2, showed no visible difference to the original VITA tab.



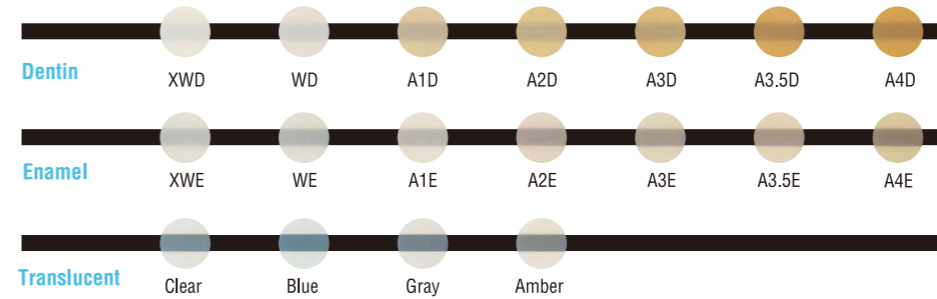
Note: Some manufacturers' recipes require up to three different shade combinations for each separate VITA shade. CLEARFIL MAJESTY™ ES-2 matches all three VITA shades with only one Premium shade combination (in this case A2E and A2D).
* Not a trademark of KURARAY CO., LTD.

Source: Dr. Shigemi Nagai, Harvard School of Dental Medicine, United States

Classic : Single-shade technique Syringe and PLT refill



Premium : Dual-shade technique Syringe and PLT refill



The colors of the actual shade guide may deviate from printed colors.

Kit

#3010-WD Syringe Professional Kit

Classic A1, A2, A3, A3.5, Premium A1E, A2E, A3E, A3.5E, A1D, A2D, A3D, A3.5D: 1 syringe per shade (3.6 g / 2.0 ml) + Clear, Amber, Blue, Gray 1 syringe per shade (1.8 g / 0.9 ml) + Shade Guide

#3100-WD PLT Professional Kit

Classic A1, A2, A3, A3.5, Premium A1E, A2E, A3E, A3.5E, A1D, A2D, A3D, A3.5D, Clear, Amber, Blue, Gray: 5 tips per shade (0.25 g) + Shade Guide

#3012-WD Syringe Introductory Kit

Classic A2, Premium A2D, A2E: 1 syringe per shade (1.2 g / 0.7 ml)

#3102-WD PLT Introductory Kit

Classic A2, Premium A2D, A2E: 5 tips per shade (0.25 g)

PLT Refill

Classic

#3110-WD A1 (20 tips x 0.25 g)
#3111-WD A2 (20 tips x 0.25 g)
#3112-WD A3 (20 tips x 0.25 g)
#3113-WD A3.5 (20 tips x 0.25 g)
#3114-WD A4 (20 tips x 0.25 g)
#3115-WD KA6 (20 tips x 0.25 g)
#3116-WD B1 (20 tips x 0.25 g)
#3117-WD B2 (20 tips x 0.25 g)
#3118-WD B3 (20 tips x 0.25 g)
#3119-WD B4 (20 tips x 0.25 g)
#3120-WD C1 (20 tips x 0.25 g)
#3121-WD C2 (20 tips x 0.25 g)
#3122-WD C3 (20 tips x 0.25 g)
#3123-WD C4 (20 tips x 0.25 g)
#3124-WD D2 (20 tips x 0.25 g)
#3125-WD D3 (20 tips x 0.25 g)
#3126-WD XW (20 tips x 0.25 g)
#3127-WD W (20 tips x 0.25 g)

Premium

#3140-WD A1E (10 tips x 0.25 g)
#3141-WD A2E (10 tips x 0.25 g)
#3142-WD A3E (10 tips x 0.25 g)
#3143-WD A3.5E (10 tips x 0.25 g)
#3144-WD A4E (10 tips x 0.25 g)
#3145-WD XWE (10 tips x 0.25 g)
#3146-WD WE (10 tips x 0.25 g)
#3147-WD A1D (10 tips x 0.25 g)
#3148-WD A2D (10 tips x 0.25 g)
#3149-WD A3D (10 tips x 0.25 g)
#3150-WD A3.5D (10 tips x 0.25 g)
#3151-WD A4D (10 tips x 0.25 g)
#3152-WD XWD (10 tips x 0.25 g)
#3153-WD WD (10 tips x 0.25 g)
#3154-WD Clear (10 tips x 0.25 g)
#3155-WD Amber (10 tips x 0.25 g)
#3156-WD Blue (10 tips x 0.25 g)
#3157-WD Gray (10 tips x 0.25 g)

Syringe Refill

Classic

#3020-WD A1 (3.6 g / 2.0 ml)
#3021-WD A2 (3.6 g / 2.0 ml)
#3022-WD A3 (3.6 g / 2.0 ml)
#3023-WD A3.5 (3.6 g / 2.0 ml)
#3024-WD A4 (3.6 g / 2.0 ml)
#3025-WD KA6 (3.6 g / 2.0 ml)
#3026-WD B1 (3.6 g / 2.0 ml)
#3027-WD B2 (3.6 g / 2.0 ml)
#3028-WD B3 (3.6 g / 2.0 ml)
#3029-WD B4 (3.6 g / 2.0 ml)
#3030-WD C1 (3.6 g / 2.0 ml)
#3031-WD C2 (3.6 g / 2.0 ml)
#3032-WD C3 (3.6 g / 2.0 ml)
#3033-WD C4 (3.6 g / 2.0 ml)
#3034-WD D2 (3.6 g / 2.0 ml)
#3035-WD D3 (3.6 g / 2.0 ml)
#3036-WD XW (3.6 g / 2.0 ml)
#3037-WD W (3.6 g / 2.0 ml)

Premium

#3050-WD A1E (3.6 g / 2.0 ml)
#3051-WD A2E (3.6 g / 2.0 ml)
#3052-WD A3E (3.6 g / 2.0 ml)
#3053-WD A3.5E (3.6 g / 2.0 ml)
#3054-WD A4E (3.6 g / 2.0 ml)
#3055-WD XWE (3.6 g / 2.0 ml)
#3056-WD WE (3.6 g / 2.0 ml)
#3057-WD A1D (3.6 g / 2.0 ml)
#3058-WD A2D (3.6 g / 2.0 ml)
#3059-WD A3D (3.6 g / 2.0 ml)
#3060-WD A3.5D (3.6 g / 2.0 ml)
#3061-WD A4D (3.6 g / 2.0 ml)
#3062-WD XWD (3.6 g / 2.0 ml)
#3063-WD WD (3.6 g / 2.0 ml)
#3064-WD Clear (1.8 g / 0.9 ml)
#3065-WD Amber (1.8 g / 0.9 ml)
#3066-WD Blue (1.8 g / 0.9 ml)
#3067-WD Gray (1.8 g / 0.9 ml)

Shade Guide

#3000-WD Shade guide

All shades

#3001-WD Shade guide compact

A1, A2, A3, A3.5, A4, B1, B2, B3, B4, C1, C2, C3, C4, D2, D3, XW, W