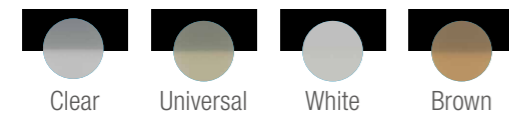


HIGH AESTHETICS

FOUR COLOUR-STABLE SHADES & MATCHING TRY-IN PASTES

With a shade matching individual requirements, lifelike results are easily obtained. Additionally, PANAVIA™ V5 Try-In Paste match PANAVIA™ Veneer LC shades and allow for a simulation of the final appearance.

PANAVIA™ Veneer LC Paste



PANAVIA™ V5 Try-in Paste



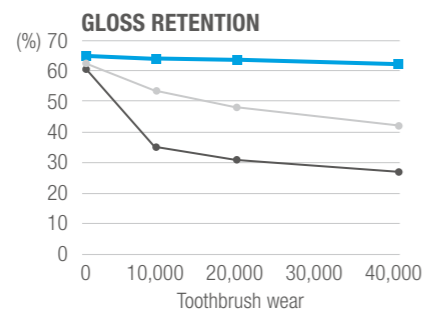
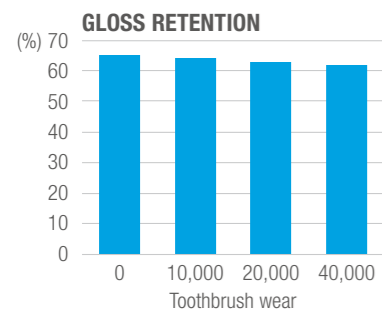
MINIMAL FILM THICKNESS

Thanks to its flowability and low film thickness, PANAVIA™ Veneer LC produces a thin evenly distributed cement layer contributing to easy seating without interference and to highly aesthetic margins.

GREAT POLISHABILITY AND GLOSS RETENTION

Change in glossiness due to toothbrush abrasion test.

High gloss durability (gloss retention) thanks to a high density of fine fillers.



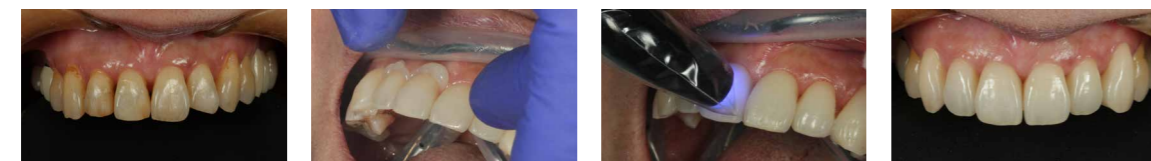
■ PANAVIA™ Veneer LC
● Competitor A
● Competitor B

Test Conditions: Specimen ø1.0mm, thickness 2mm. After smoothing the surface with water-resistant abrasive paper of #1000 to #2500, final polishing with lapping film. Initial value (measure the gloss level after polishing*). Toothbrush wear (measured after 40,000 strokes with 250g load, 30 strokes/minute, 10 wt% toothpaste*). Measured with a glossmeter VG 2000 (Nippon Denshoku Kogyo) at an angle of 60°.

Note: Values may vary depending on measuring conditions.

Source: Kuraray Noritake Dental Inc.

CLINICAL CASE Courtesy of Dr. Sato



Initial status before six veneers preparation (from #13 to #23).

PANAVIA™ Veneer LC excellent consistency and paste viscosity allowed for easier dispensing, seating and excess cement removal.

Light-cure of each area and margins.

Final result after cementation of six veneers of KATANA™ Zirconia STML.

Please refer to the Instructions for Use for detailed instructions.

ORDER INFORMATION

PANAVIA™ Veneer LC Standard Kit

#4500-WD Standard Kit Universal (A2)

#4501-WD Standard Kit Clear

Standard Kit contains:

- Paste 2.6 g (1.5 ml) x 1
- PANAVIA™ V5 Try-in Paste 2.4 g (1.8 ml) x 1
- PANAVIA™ V5 Tooth Primer 2 ml x 1
- CLEARFIL™ CERAMIC PRIMER PLUS 2 ml x 1
- K-ETCHANT Syringe 3 ml x 1
- Accessories
- Applicator tip (16G) 5 pcs, Applicator brushes (fine <silver>) 50 pcs
- Mixing dish (PN) 1 pc, Needle tip (E) 20 pcs

PANAVIA™ Veneer LC Paste (2.6g/1.5ml)

#4505-WD Paste Universal (A2)

#4506-WD Paste Clear

#4507-WD Paste Brown (A4)

#4508-WD Paste White

PANAVIA™ Veneer LC Applicator tip (20 pcs)

#4513-WD PANAVIA™ Veneer LC Applicator tip (16G)

PANAVIA™ V5 Try-In Paste (1.8ml)

#3621-WD Universal (A2)

#3622-WD Clear

#3623-WD Brown (A4)

#3624-WD White

Others

#3637-WD CLEARFIL™ CERAMIC PRIMER PLUS (4ml)

#3635-WD PANAVIA™ V5 Tooth Primer (4ml)

- Before using this product, be sure to read the Instructions for Use supplied with the product.
- The specifications and appearance of the product are subject to change without notice.
- Printed colour can be slightly different from actual colour.

"KATANA" is a trademark or registered trademark of NORITAKE CO., LIMITED.
"PANAVIA" and "CLEARFIL" are trademarks or registered trademarks of KURARAY CO., LTD.

PANAVIA™ Veneer LC

The veneer specialist mastering highly aesthetic cementation

Innovative curing technology
Optimised handling
High aesthetics



CHALLENGING TASK, GREAT SOLUTION

Minimally invasive procedures using highly aesthetic restorations is what patients expect when they seek restorative treatment. With the various types of restorations available today, it is possible to meet these expectations – provided that the right materials are used. For the placement of veneers the new PANAVIA™ Veneer LC is precisely what you need.

FEATURES & BENEFITS

- 1 INNOVATIVE CURING TECHNOLOGY**
 The light-curing cement offers a long working time that facilitates simultaneous placement of multiple veneers. PANAVIA™ V5 Tooth Primer seals the adhesive interface by immediate curing upon contact with the paste (touch-cure). The result is a strong and durable bond.
- 2 OPTIMISED HANDLING**
 An appropriate paste viscosity and consistency allow for easier dispensing and correct seating of the restoration, while the one-second tack-cure function provides smooth excess cement removal.
- 3 HIGH AESTHETICS**
 A low film thickness and good polishability allow users to create smooth margins. Four different selected, highly colour stable shades offer long lasting aesthetics. Matching try-in pastes make it easy to select the right shade.

INDICATIONS

- PANAVIA™ Veneer LC can be used for permanent cementation of following ceramic and composite restorations;
- ✓ Veneers
 - ✓ Inlays and onlays with less than 2 mm in thickness




TRULY PANAVIA™

It all started in 1983, when PANAVIA™ EX was launched as the first adhesive resin cement containing the original MDP Monomer from KURARAY CO., LTD. Quickly, the PANAVIA brand became popular among dental practitioners worldwide for its excellent adhesion. A constant improvement of existing and development of new technologies ultimately resulted in the current line-up of easy-to-use and highly aesthetic resin cements that provide top-level bond strength.

INNOVATIVE CURING TECHNOLOGY

PANAVIA™ Veneer LC is a light-curing resin cement system that offers excellent stability under ambient light, which leads to a working time of 200 seconds*. This allows you to place multiple veneers at a time without having to race against setting. Polymerization may be started whenever you are ready for it.

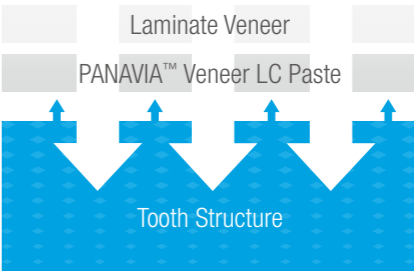
* Working time: Sensitivity to ambient light (8000 lux, ISO 4049)



ONE-COMPONENT SELF-ETCHING PRIMER
Contributes to the polymerization of the adhesive interface.

LIGHT-CURE CEMENT PASTE
Excellent ambient light stability.

LIGHT-CURE
Seal the adhesive interface with tooth structure by touch-cure while ensuring sufficient operation time.

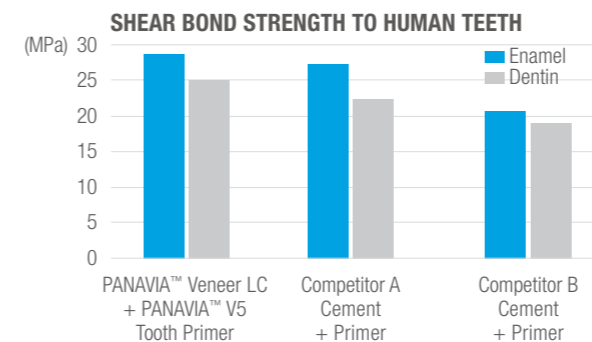


WORKING TIME
200 SEC*

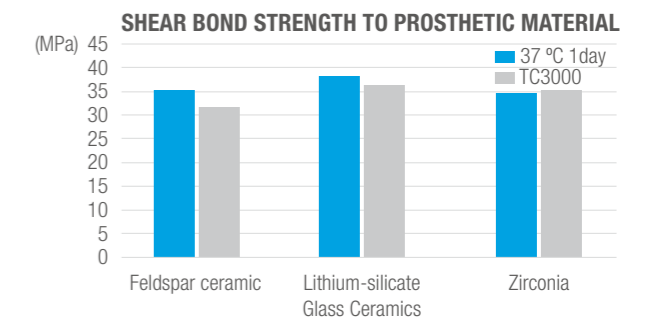
* Working time: Sensitivity to ambient light (8000 lux, ISO 4049)

↑ Chemical polymerization catalyst contributes to polymerization.

TOUCH-CURE TECHNOLOGY PROVIDES FOR A STRONG AND DURABLE BOND



Test conditions: Polishing #1000, phosphoric acid enamel etching, SUS chip (dia. 3mm), measured after storage in water at 37°C for 1 day. Source: Kuraray Noritake Dental Inc.



Test conditions: Polishing #1000, sandblasting (KATANA™ Zirconia) or hydrofluoric etching (glass ceramics), SUS chip (dia. 5mm), measured after storage in water at 37°C for 1 day, or thermal cycle at 4-60°C. Source: Kuraray Noritake Dental Inc.

OPTIMISED HANDLING

It is possible to reduce the time and effort involved in veneer placement with a cement that supports homogeneous cement application, smooth veneer positioning and excess removal, and quick polishing. PANAVIA™ Veneer LC offers all the required features and gives high control thanks to the specially designed application tip.

IDEAL CONSISTENCY

Stays put where applied, flows well during seating - for easy placement without drifting or sagging.

NON-STICKINESS

Easy and secure application across the intaglio surface.

SMOOTH CLEAN-UP

Removal of excess cement in one piece after a one-second tack-cure.