

KATANA™ Zirconia Block

For use with
CEREC

Super Translucent Multi Layered Zirconia for Chair Side

18-minute Sintering
Application for 3-unit Bridge





18-minute Sintering with SpeedFire

KATANA™ Zirconia Block, the innovative multi layered zirconia block, can be used with Dentsply Sirona's CEREC system*¹. A new 18-minute sintering program*² has been developed and is now ready to install. The new technology makes it possible to fabricate a full zirconia restoration in approx. 35 minutes.



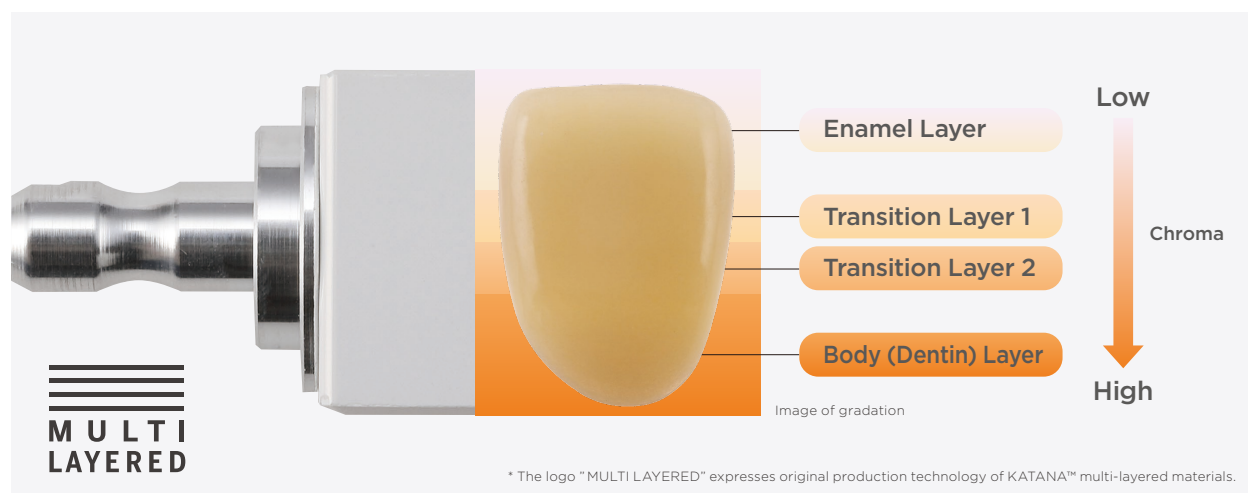
*¹ When using this product, use the following guidelines: CEREC software 4.5.2 or later is required. For use bridge block and 18-minute sintering (wall thickness 3mm or less), CEREC software 4.6.1 or later is required. For 18-minute sintering (wall thickness 6mm or less), CEREC software 5.0.2 or later is required. In the US, for bridge block and 18-minute sintering (wall thickness 6mm or less), CEREC software 5.1.0 or later is required.

*² For cases where the wall thickness is less than 6mm using dry milling.

*³ Dry milling is recommended. If wet milling/grinding is performed by using cooling water contaminated by silica-based glass ceramics (lithium disilicate glass, etc.), the translucency of the zirconia may be reduced after baking. Before wet milling/grinding clean the milling/grinding chamber, cooling water tank and filter insert. The cooling water must be changed in order to assure optimum results.

Multi Layered Technology

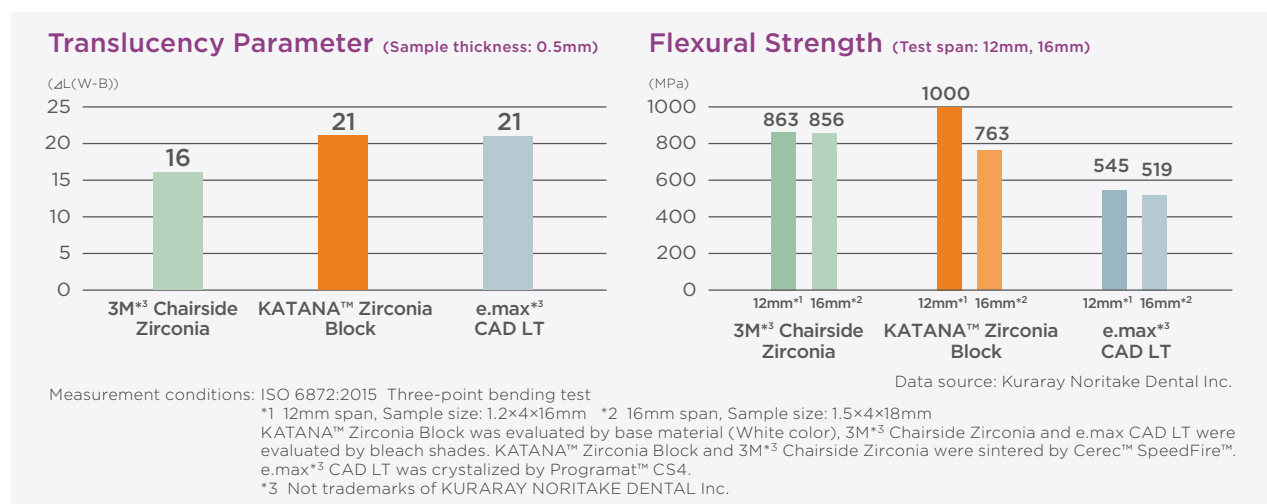
The multi layered KATANA™ Zirconia Block consists of four layers of zirconia in gradated shades. This product allows the chair side fabrication of natural-tooth-colored restorations – eliminating a time-consuming and difficult situation when staining the restoration.





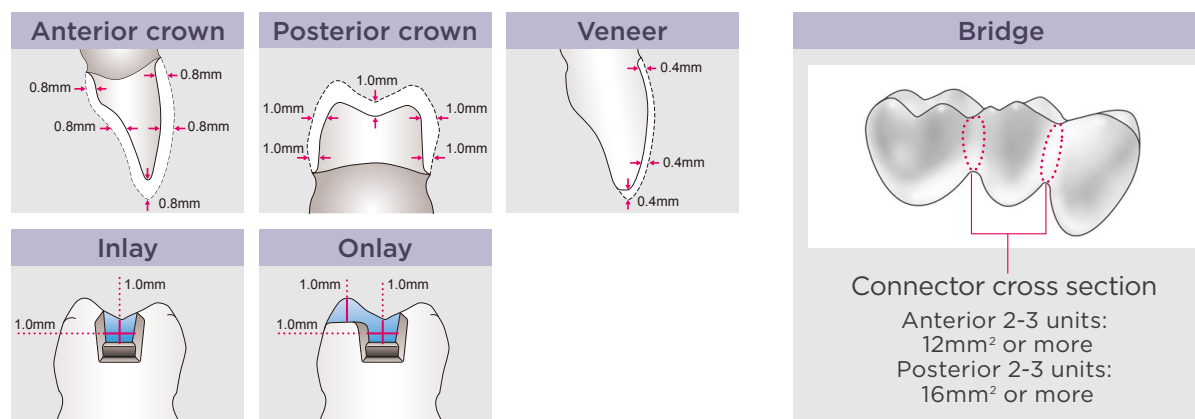
New Solution For Chair Side

Dentists in the clinical setting often ask themselves to decide which is more important, the mechanical or the esthetic qualities of restorations. With its superb mechanical properties and esthetic qualities that mimic natural teeth, KATANA™ Zirconia Block resolves this dilemma. It provides new solutions to a variety of clinical problems that cannot be addressed by lithium silicate glass (LS glass) or competitor's zirconia.



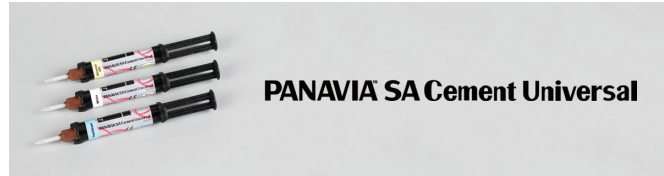
Minimizing Teeth Preparation

As an all-ceramic option, zirconia has excellent mechanical properties. KATANA™ Zirconia Block, a highly translucent form of zirconia, has better mechanical properties than LS glass. This means that it is possible when using KATANA™ Zirconia Block to design a thinner restoration than those that can be fabricated using LS glass. This results in both great mechanical properties and beautiful esthetics, with no conflict!

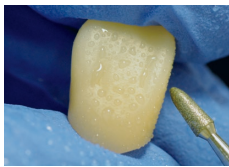


Reliability for Zirconia Adhesion

Our adhesive MDP monomer adheres especially well to zirconia. Reliable bonding of KATANA™ Zirconia Block to the tooth structure can be attained by using CLEARFIL™ SA Cement Universal or PANA VIA™ V5, both utilizing MDP monomer technology.



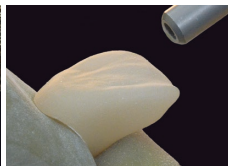
Finishing with CERABIEN™ ZR FC Paste Stain



Create a surface texture over the entire crown



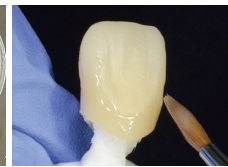
Polish areas which are in contact with opposing tooth*



Sandblast the surface of the crown (50-70 μm, 0.2 MPa / 2bar)



Clean restoration using an ultrasonic cleaner (in alcohol or acetone)



Apply glaze and bake



* When the restoration is to be finished using the polishing method, polish entire surface, and select a shade one level brighter than the target color.

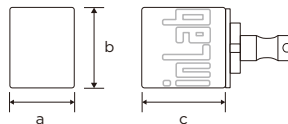
Wide Shade Selection

STML Super Translucent Multi Layered



Block Size

Size	a (height)	b (width)	c (length)
12Z	15.3mm	19.2mm	20.2mm
14Z	17.8mm	19.2mm	20.2mm
14Z L	17.8mm	19.2mm	40.0mm



Other Information

Composition : ZrO_2 , Y_2O_3
Thermal expansion coefficient : $9.8(\pm 0.2) \times 10^{-6} / \text{K}$



Kuraray Noritake Dental Inc.

300 Higashiyama, Miyoshi-cho, Miyoshi, Aichi 470-0293, Japan

Website www.kuraraynoritake.com

- Before using this product, be sure to read the Instructions for Use supplied with the product.
- The specifications and appearance of the product are subject to change without notice.
- Printed color can be slightly different from actual color.

"PANA VIA" and "CLEARFIL" are trademarks of KURARAY CO., LTD
"KATANA" and "CERABIEN" are trademarks of NORITAKE CO., LIMITED.
"CEREC" and "SpeedFire" are trademarks of Dentsply Sirona Inc.